

# BLUE MOUNTAIN COMMUNITIES

## Experience the Granite Bay lifestyle at The Glen, where your dream home awaits.

This unique neighborhood offers single and two-story open plan designs featuring classic American architecture with a quintessential California twist. Nestled beyond a neighborhood park with a limited release streetscape that features only 33 charming homes, The Glen is the exclusive enclave you've been looking for.

Nestled in the heart of Granite Bay, The Glen offers unparalleled access to the best recreational activities, from hiking and golfing to beautiful Folsom Lake, and the area's signature picturesque parks and green space. For those with school-age children, you'll love to know that The Glen will place you in one of the most highly sought-after educational opportunities in the nation with 10 out of 10 rated schools, and notably the coveted Roseville Joint Unified High School District.

Delight your palate and indulge in some retail therapy at the nearby Roseville shopping and dining scene, which features high-quality farm-to-table restaurants and the region's ultimate shopping experience.

**At The Glen, we understand that you're looking for more than just a house; you're looking for a place to call home.**

# Home is All About You.



by Blue Mountain Communities

Call or Text (707) 416-1712

theglen@bluemountaincommunities.com  
6832 Eureka Road, Granite Bay, CA 95746

## RESIDENCE FEATURES AND DETAILS

### DISTINCTIVE EXTERIORS

- Beautifully durable architectural composition shingle roofs
- Designer selected exterior color schemes

### THOUGHTFUL INTERIORS

- Stylish, 2-panel style, 8' interior doors with black lever door handles
- LVP, tile, and plush designer carpeting throughout
- Convenient interior laundry rooms with hookups for electric dryers
- 9 to 12 foot and volume ceilings (per plan)
- 5/8" Drywall
- 7 1/2" flat stock baseboards
- Cabinets with pull hardware
- Double shelf and poles in closets
- Fully-finished, tape, texture, and painted garage interiors

### GOURMET KITCHENS

- Chrome Kohler pull-out faucet
- Beautiful quartz countertops with full slab backsplash
- Beautiful shaker cabinets offered in multiple stain choices, upgrade options available
- Stainless steel sink with waste disposal system
- Luxury Hestan ranges on select homes
- Refrigerator area plumbed for ice maker
- Stainless Steel Bosch appliance package, includes gas range, cabinet hood insert, multi-cycle dishwasher, and built-in microwave

### ENERGY CONSERVATION

- Energy efficient water heater
- Vinyl dual pane windows with low-e glass
- All homes meet or exceed Title-24 energy requirements
- Water conserving shower heads, faucets, and toilets

### LUXURIOUS PRIMARY BATHS

- Exquisite polished chrome Kohler faucet, plumbing fixtures, and bath accessories
- Full width vanity mirror
- Beautiful E-Stone countertops with 6" backsplash
- Oversized shower with E-stone surround & tile shower floor
- Frameless shower enclosures with chrome hardware

### SECONDARY BATHROOMS

- Exquisite polished chrome Kohler faucets, plumbing fixtures, and bath accessories
- Full width vanity mirror
- Beautiful E-Stone countertops with 6" backsplash and shower/tub surrounds

### PERSONALIZING OPPORTUNITIES

- A selection of upgraded cabinets, finishes, & inserts
- Appliance package upgrades
- Electrical upgrade options
- Opportunity to select upgrade designer collection for countertops, surrounds, and flooring
- Lighting fixture and plumbing fixture upgrades

### SMART HOME FEATURES

- Brilliant Smart Switch
- Ring Pro video doorbell
- Smart Thermostat
- Centrally located wireless access point
- One-year white glove Technical Support

### BLUE MOUNTAIN CUSTOMER CARE PACKAGE

- Builder 1 year fit and finish warranty
- Buyer Frame Walk
- New Homeowner Orientation
- 30 day Customer Care Follow-up Visit



**PRELIMINARY**

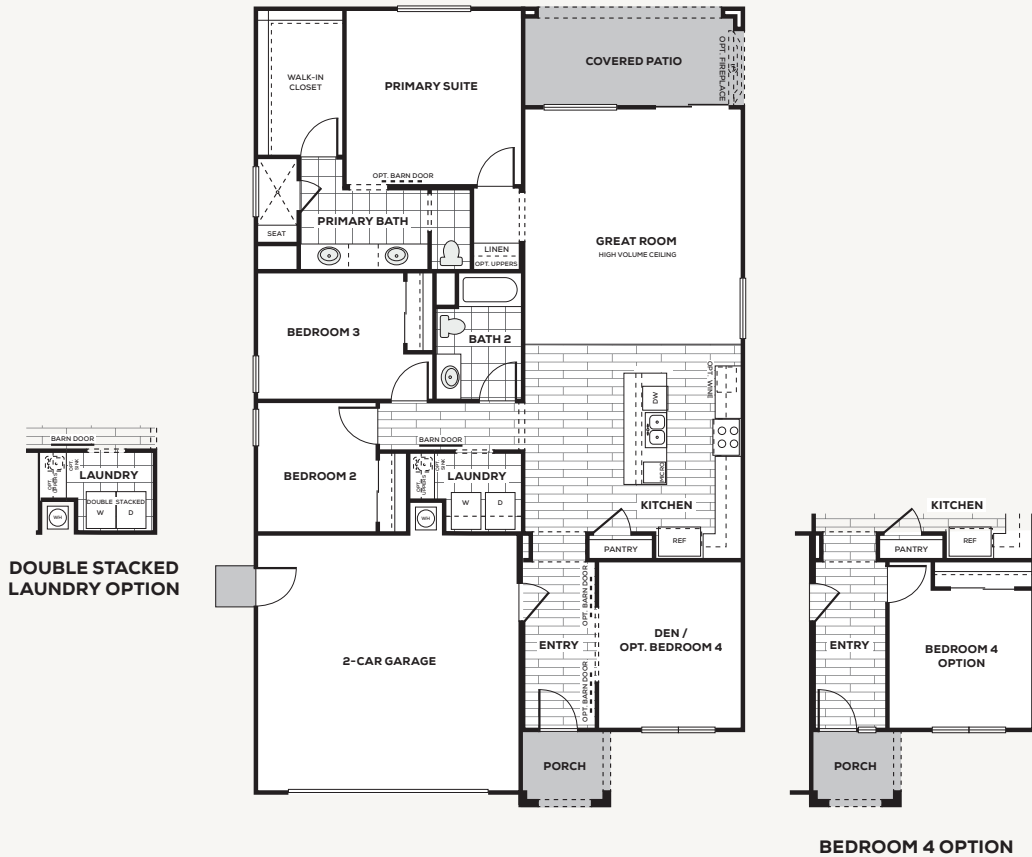


Plans are built with left or right hand garages on all plans. In a continuous effort to improve our product, Blue Mountain reserves the right to make changes or modifications to pricing, standard features, options & other building specifications & dimensions without prior notice. Please see sales representative for details. Square footage is approximate based upon design. 07.11.25

**BLUE MOUNTAIN**  
COMMUNITIES

*Alder*

Plan 1 | 1,866 square feet | Single Story  
3-4 Bedrooms | 2 Baths | 2 Car Garage



**PRELIMINARY**



Plans are built with left or right hand garages on all plans. In a continuous effort to improve our product, Blue Mountain reserves the right to make changes or modifications to pricing, standard features, options & other building specifications & dimensions without prior notice. Please see sales representative for details. Square footage is approximate based upon design. 07.11.25



PRELIMINARY

*Alder*



CALIFORNIA FARMHOUSE (A)



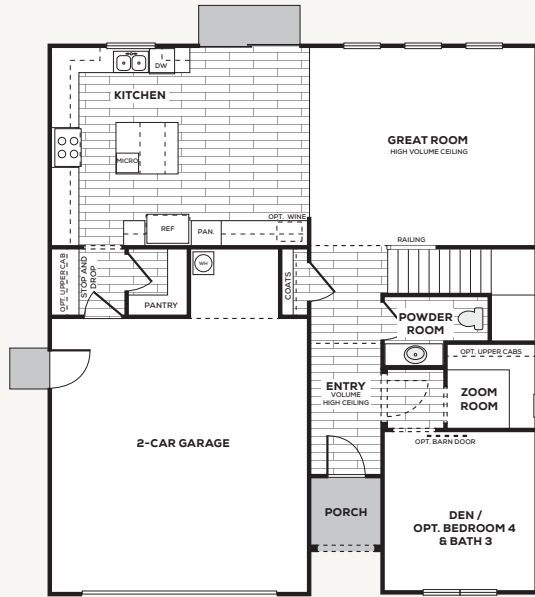
WESTERN PRAIRIE (B)

**BLUE MOUNTAIN  
COMMUNITIES**

# Willow

Plan 2 | 2,590 square feet | Two-Story

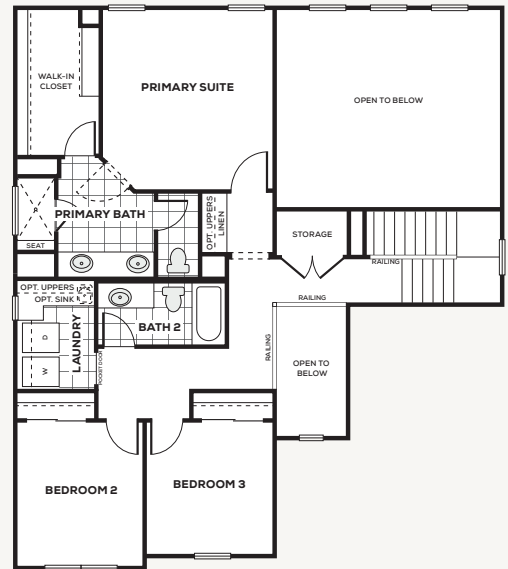
3-4 Bedrooms | Den | 2.5-3 Baths | 2 Car Garage + Storage



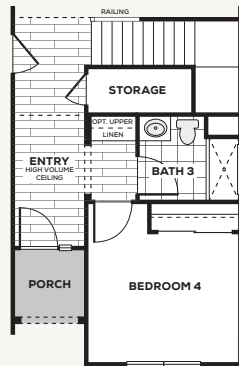
FIRST FLOOR



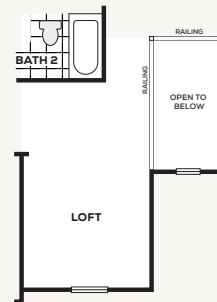
DOUBLE STACKED  
LAUNDRY OPTION



SECOND FLOOR



BEDROOM 4 & BATH 3 OPTION



LOFT OPTION



**PRELIMINARY**



Plans are built with left or right hand garages on all plans. In a continuous effort to improve our product, Blue Mountain reserves the right to make changes or modifications to pricing, standard features, options & other building specifications & dimensions without prior notice. Please see sales representative for details. Square footage is approximate based upon design. 07.11.25



PRELIMINARY

*Willow*



CALIFORNIA FARMHOUSE (A)

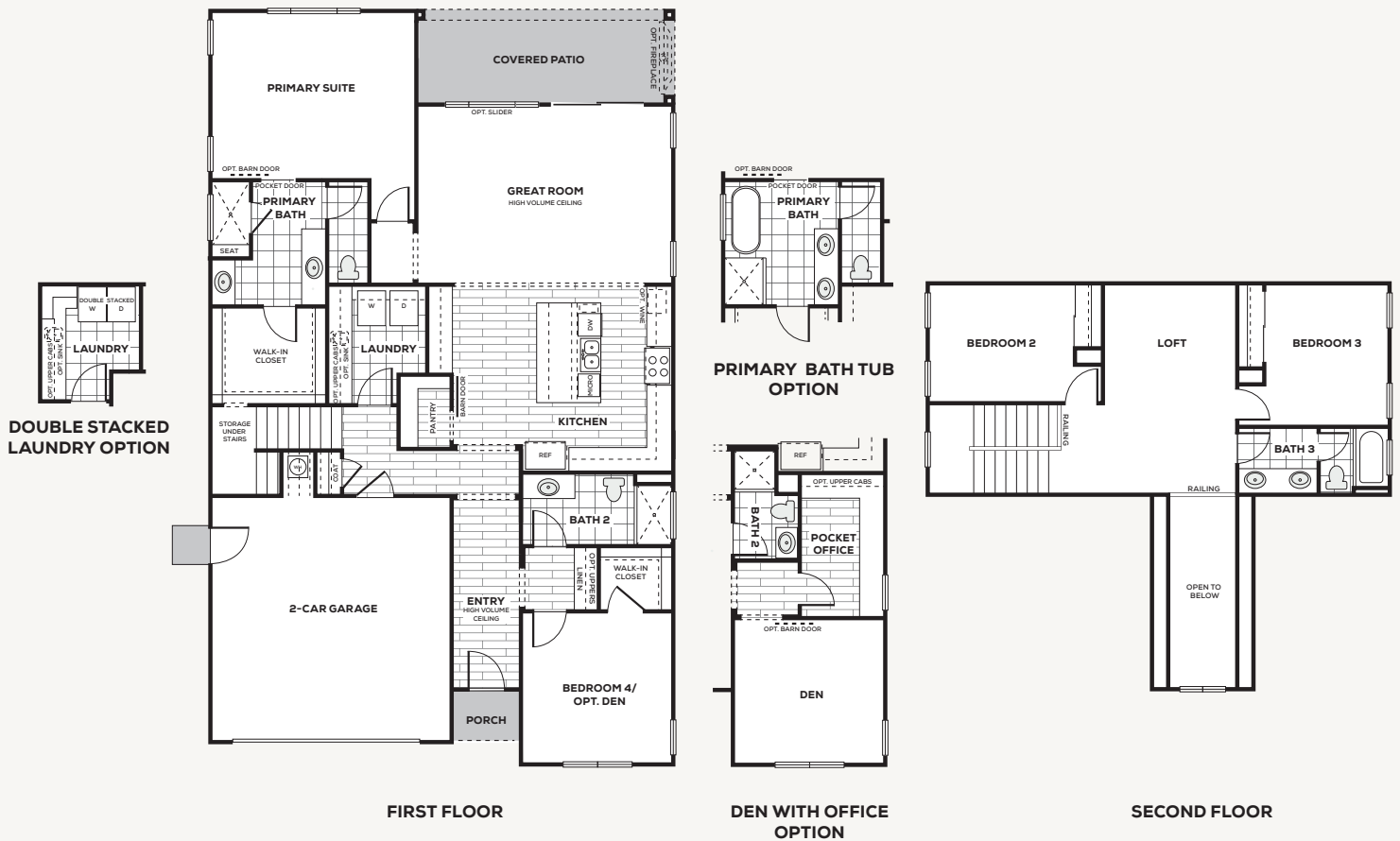


WESTERN PRAIRIE (B)

BLUE MOUNTAIN  
COMMUNITIES

*Sequoia*

Plan 3 | 2,566 square feet | Two-Story  
3-4 Bedrooms | Loft | 3 Baths | 2 Car Garage



PRELIMINARY



Plans are built with left or right hand garages on all plans. In a continuous effort to improve our product, Blue Mountain reserves the right to make changes or modifications to pricing, standard features, options & other building specifications & dimensions without prior notice. Please see sales representative for details. Square footage is approximate based upon design. 07.11.25



PRELIMINARY

*Sequoia*



CALIFORNIA FARMHOUSE (A)



CLASSIC AMERICANA (B)



BLUE MOUNTAIN  
COMMUNITIES

## *The Park at The Glen*



One of the best parts of living at The Glen will be the beautifully designed neighborhood park.

Set off the road for privacy, this family-friendly park is chock-full of beautiful landscaping and engaging features. With a covered picnic table and lots of grass area, The Glen Neighborhood Park will be a popular location for outdoor fun, playdates, or just enjoying fresh air right at home.



PRELIMINARY



Plans are built with left or right hand garages on all plans. In a continuous effort to improve our product, Blue Mountain reserves the right to make changes or modifications to pricing, standard features, options & other building specifications & dimensions without prior notice. Please see sales representative for details. Square footage is approximate based upon design. 07.11.25

BLUE MOUNTAIN  
COMMUNITIES

# Welcome to The Glen



PRELIMINARY



Plans are built with left or right hand garages on all plans. In a continuous effort to improve our product, Blue Mountain reserves the right to make changes or modifications to pricing, standard features, options & other building specifications & dimensions without prior notice. Please see sales representative for details. Square footage is approximate based upon design. 07.11.25