



## BLUE MOUNTAIN COMMUNITIES

# A Delta Dream In Your Backyard

Wake up every day to amazing views and uplifting delta breezes. Located in the Delta Coves master-plan on Bethel Island, this is an extraordinary opportunity to experience a new style of living with resort-inspired luxury.

At the water's edge, each residence's backyard is appointed with a boat dock. From here you can boat on the Delta's hundreds of miles of breathtaking waterways and be on fast water in under 30 minutes. Enjoy endless boating, fishing, and water sports with new discoveries around every bend. Explore the Sacramento or San Joaquin Rivers out to the Pacific Ocean, creating lasting memories with friends and family. Then return to the comfort of home, only steps from shore.

Land lovers rejoice as well. Enjoy bike rides, barbeques, gatherings, fitness, lawn games, and more at The Island Camp located within the immediate neighborhood.

Start living your dream now. About an hour's drive from the San Francisco Bay, Silicon Valley, or Napa Valley; Delta Coves serves as the perfect home or "home away from home" when your ambition for adventure or desire for tranquility calls. Relax, play, and flourish at your own waterfront residence.

Where will your Delta dream take you?

Call / Text 707.317.3927  
deltacoves@bluemountaincommunities.com  
44 Seaward Court | Bethel Island, CA 94511





Find peace, recreation, and fun at Delta Coves.

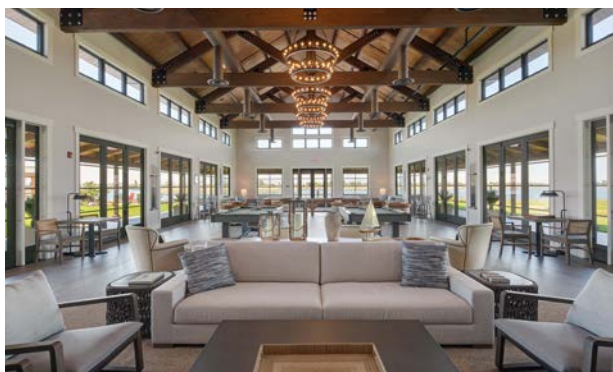
In the center of it all, you'll find our private  
Delta Coves Island Camp - a vibrant  
15,000-square-foot hub of activities.

# The Island Camp

Head to the pool for swimming or lounging in  
the warm sun. Work out at the fitness facilities or  
movement studio. Stroll on the waterfront.

Enjoy social time in the Club Room  
with fellow members.

The best part is it is all surrounded by  
gorgeous waterfront views.





## RESIDENCE FEATURES AND DETAILS

### DISTINCTIVE EXTERIORS

- Designer selected exterior color schemes with professional paint by Sherwin Williams
- Nest Hello video doorbell
- Beautiful durable composition roofs
- Garage door with Lift Master opener (WiFi with battery back up)

### THOUGHTFUL INTERIORS

- Stylish two-panel, 8' interior doors
- 18"x18" tile and designer carpeting throughout
- Convenient interior laundry rooms with gas dryer hook ups
- 9 to 12 foot ceilings
- 7 1/4" contemporary baseboards
- Polished chrome lever door handles
- Lower cabinet in Laundry Room with E-Stone tops to coordinate with other locations throughout the home
- Flat screen pre-wire in Living Room and Primary Bedroom
- USB outlets in Kitchen (1) and Primary Bedroom (2)
- Wired for data and cable in all Bedrooms
- Professional paint by Sherwin Williams

### GOURMET KITCHENS

- Designer selected Kohler pull-down kitchen faucet with polished chrome finish
- Stylish quartz countertops with choice of three colors
- Beautiful cabinets with polished chrome pull style hardware
- Stainless steel undermount sink with 1/2 hp disposal
- Luxury Hestan ranges on select homes
- Refrigerator area plumbed for ice maker
- Stainless steel GE appliance package

### ENERGY CONSERVATION

- Solar system lease included with an option to purchase (right-sized system per plan)
- Dual-zone HVAC with Nest E thermostat downstairs and Honeywell thermostat upstairs
- Energy efficient Rinnai tankless water heater with recirculating pump and push button for on-demand hot water

- Vinyl dual pane windows with low-e glass
- All homes meet or exceed Title-24 energy requirements
- Designer selected water conserving shower heads and faucets
- Water conserving toilets
- All LED lighting throughout

### PRIVATE PRIMARY SUITES

- Designer selected Kohler faucets and plumbing fixtures with polished chrome finish
- Glass shower enclosures with hardware finish to match plumbing
- Full width vanity mirror
- Glamorous E-Stone on vanities and primary shower
- Thoughtfully selected vanity lights

### SECONDARY BATHROOMS

- Designer selected Kohler faucets and plumbing fixtures with polished chrome finish
- Beautiful E-Stone vanities
- Full vanity width mirror
- E-Stone shower and tub surrounds (Bath 2)

### PERSONALIZING OPPORTUNITIES

- Designer selected paint grade color cabinet upgrades
- Appliance package upgrades
- Numerous electrical and plumbing fixture upgrades
- Innovative security system
- Lighting fixture upgrades throughout the home
- Upgraded interior door and hardware options
- Upgraded framed bath vanity mirror
- Customizations for countertops, surrounds, and flooring

### BLUE MOUNTAIN CUSTOMER CARE PACKAGE

- Builder 1-year fit and finish warranty
- Buyer Frame Walk
- New Homeowner Orientation
- 30-day Customer Care Follow-up Visit

# PRELIMINARY

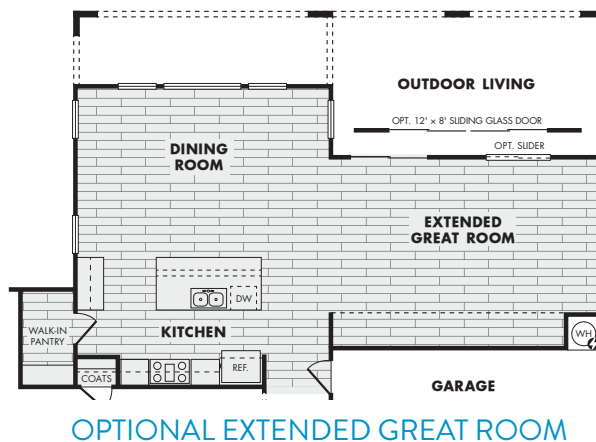
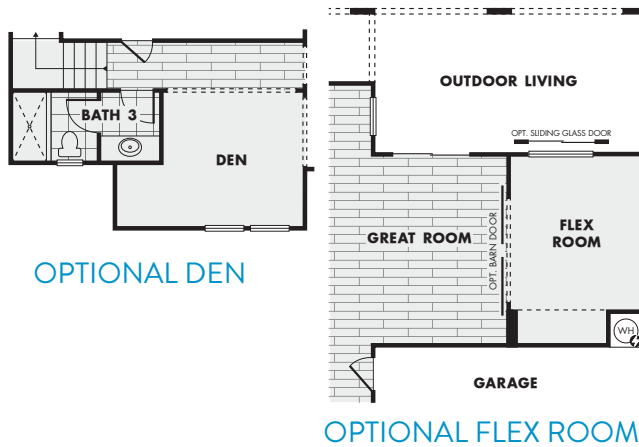
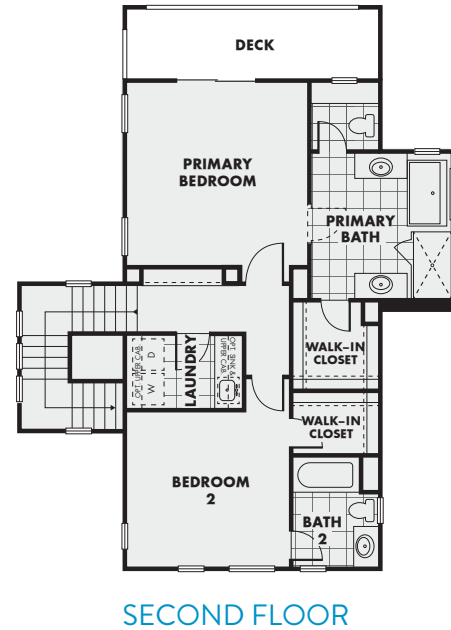
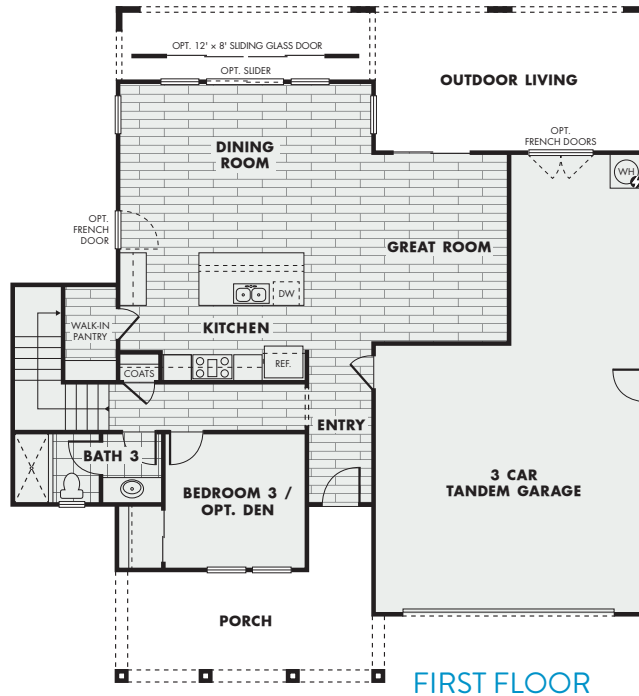


In a continuous effort to improve our product, Blue Mountain reserves the right to make changes or modifications to pricing, standard features, options & other building specifications & dimensions without prior notice. Please see sales representative for details. Square footage is approximate based upon design. 10.14.24

# AZURE

BLUE MOUNTAIN  
COMMUNITIES

1,864 / 2,005 square feet | 3 Bedrooms | 3 Baths | 3 Car Tandem Garage



PRELIMINARY



In a continuous effort to improve our product, Blue Mountain reserves the right to make changes or modifications to pricing, standard features, options & other building specifications & dimensions without prior notice. Please see sales representative for details. Square footage is approximate based upon design. 10.14.24

delta coves  
ON THE GREAT CALIFORNIA WATERWAYS

# AZURE

BLUE MOUNTAIN  
COMMUNITIES

1,864 / 2,005 square feet | 3 Bedrooms | 3 Baths | 3 Car Tandem Garage



A



B



C

## PRELIMINARY



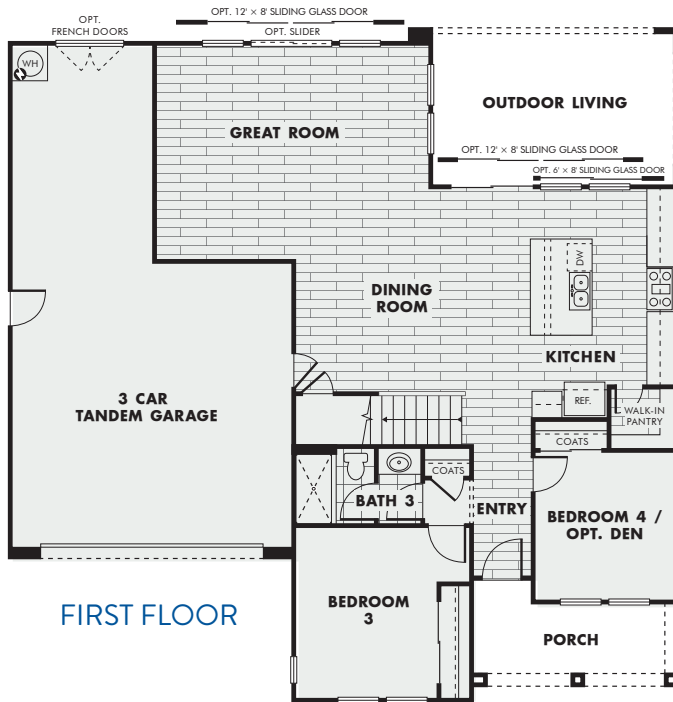
In a continuous effort to improve our product, Blue Mountain reserves the right to make changes or modifications to pricing, standard features, options & other building specifications & dimensions without prior notice. Please see sales representative for details. Square footage is approximate based upon design. 10.14.24

  
delta coves  
ON THE GREAT CALIFORNIA WATERWAYS

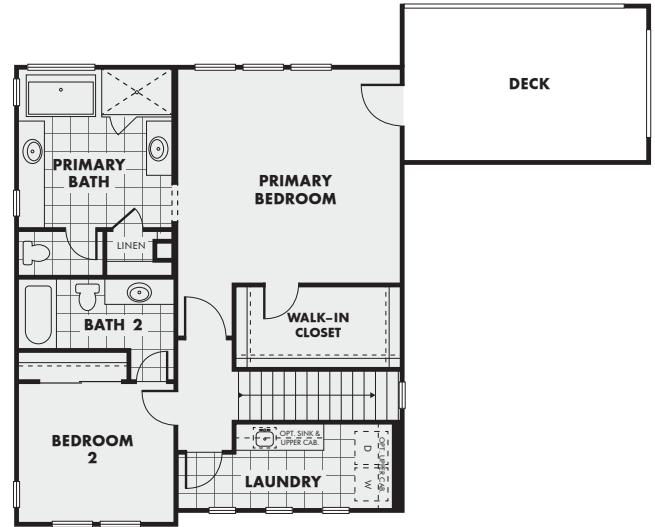
# INDIGO

BLUE MOUNTAIN  
COMMUNITIES

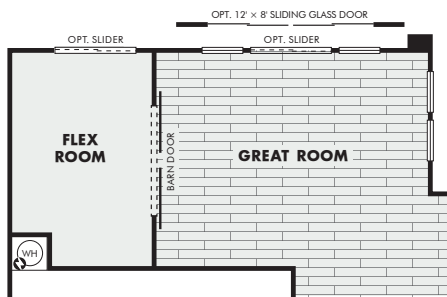
2,143 square feet | 4 Bedrooms | 3 Baths | 3 Car Tandem Garage



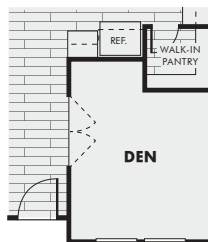
FIRST FLOOR



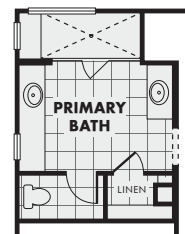
SECOND FLOOR



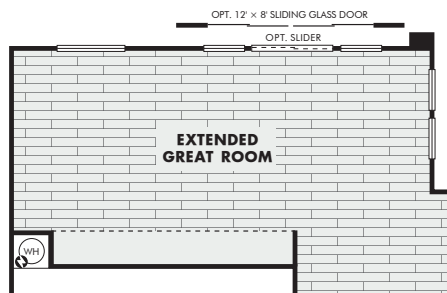
OPTIONAL FLEX ROOM



OPTIONAL DEN



OPTIONAL  
PRIMARY  
SHOWER



OPTIONAL EXTENDED GREAT ROOM

PRELIMINARY



In a continuous effort to improve our product, Blue Mountain reserves the right to make changes or modifications to pricing, standard features, options & other building specifications & dimensions without prior notice. Please see sales representative for details. Square footage is approximate based upon design. 10.14.24

delta coves  
ON THE GREAT CALIFORNIA WATERWAYS

# INDIGO

BLUE MOUNTAIN  
COMMUNITIES

2,143 square feet | 4 Bedrooms | 3 Baths | 3 Car Tandem Garage



A



B



C

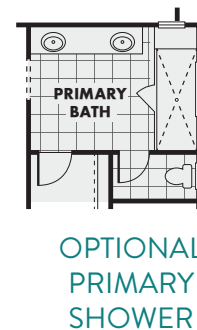
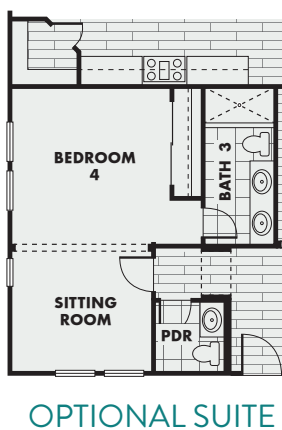
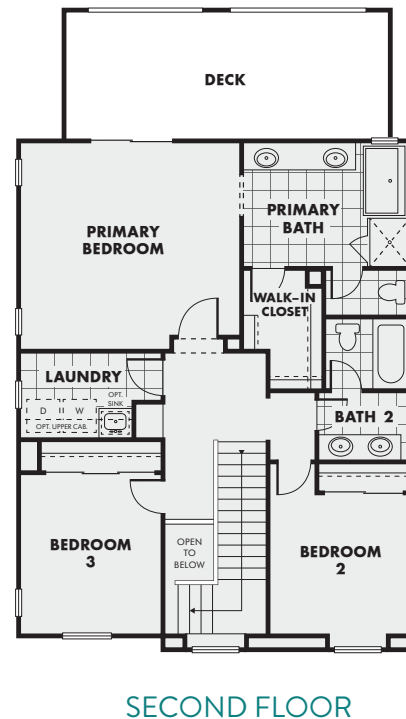
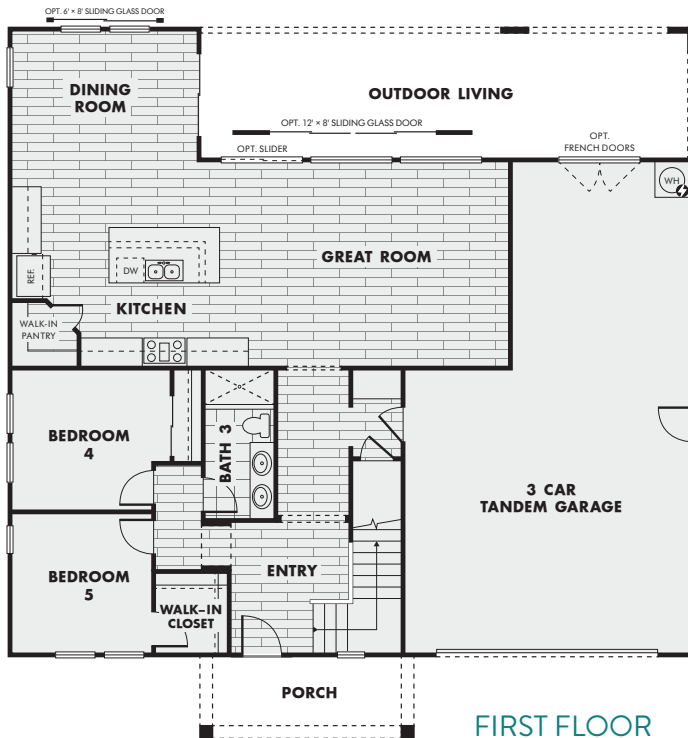
PRELIMINARY



In a continuous effort to improve our product, Blue Mountain reserves the right to make changes or modifications to pricing, standard features, options & other building specifications & dimensions without prior notice. Please see sales representative for details. Square footage is approximate based upon design. 10.14.24

  
delta coves  
ON THE GREAT CALIFORNIA WATERWAYS

2,286 / 2,328 square feet | 5 Bedrooms | 3 Baths | 3 Car Tandem Garage



### PRELIMINARY



In a continuous effort to improve our product, Blue Mountain reserves the right to make changes or modifications to pricing, standard features, options & other building specifications & dimensions without prior notice. Please see sales representative for details. Square footage is approximate based upon design. 10.14.24



2,286 / 2,328 square feet | 5 Bedrooms | 3 Baths | 3 Car Tandem Garage



**A**



**B**



**C**

**PRELIMINARY**

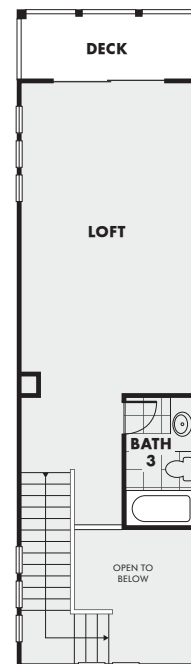
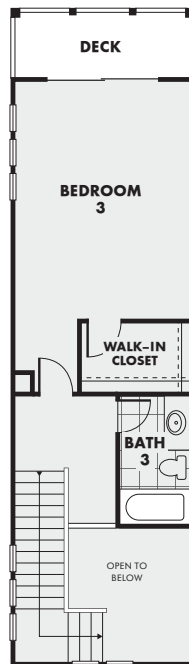
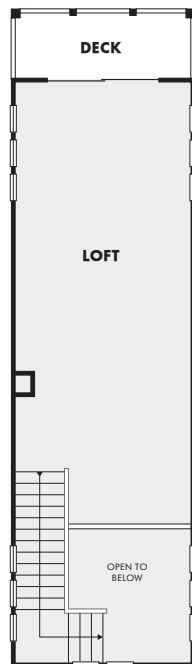
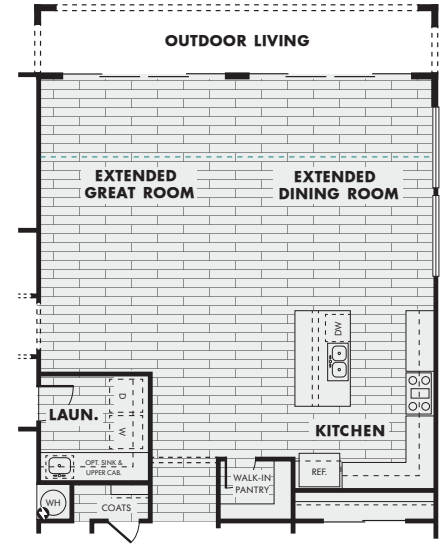
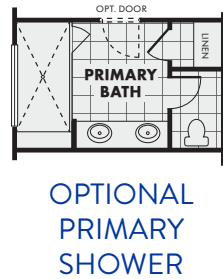
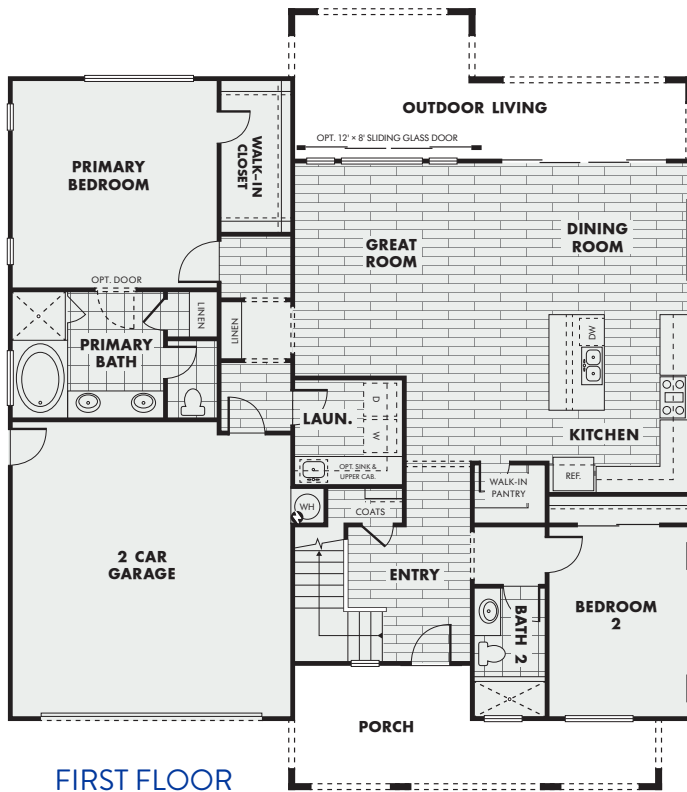


In a continuous effort to improve our product, Blue Mountain reserves the right to make changes or modifications to pricing, standard features, options & other building specifications & dimensions without prior notice. Please see sales representative for details. Square footage is approximate based upon design. 10.14.24

# ROYAL

BLUE MOUNTAIN  
COMMUNITIES

2,105 / 2,278 square feet | 2 - 3 Bedrooms | Loft | 2 - 3 Baths | 2 Car Garage



PRELIMINARY



In a continuous effort to improve our product, Blue Mountain reserves the right to make changes or modifications to pricing, standard features, options & other building specifications & dimensions without prior notice. Please see sales representative for details. Square footage is approximate based upon design. 10.14.24

**delta coves**  
ON THE GREAT CALIFORNIA WATERWAYS

# ROYAL

BLUE MOUNTAIN  
COMMUNITIES

2,105 / 2,278 square feet | 2 - 3 Bedrooms | Loft | 2 - 3 Baths | 2 Car Garage



A



B



C

PRELIMINARY

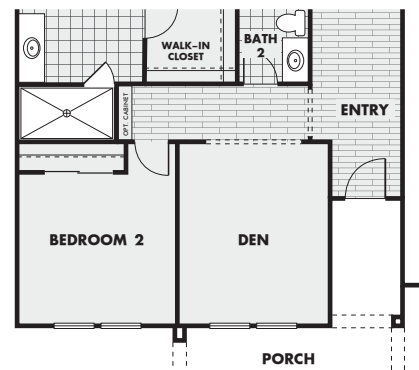
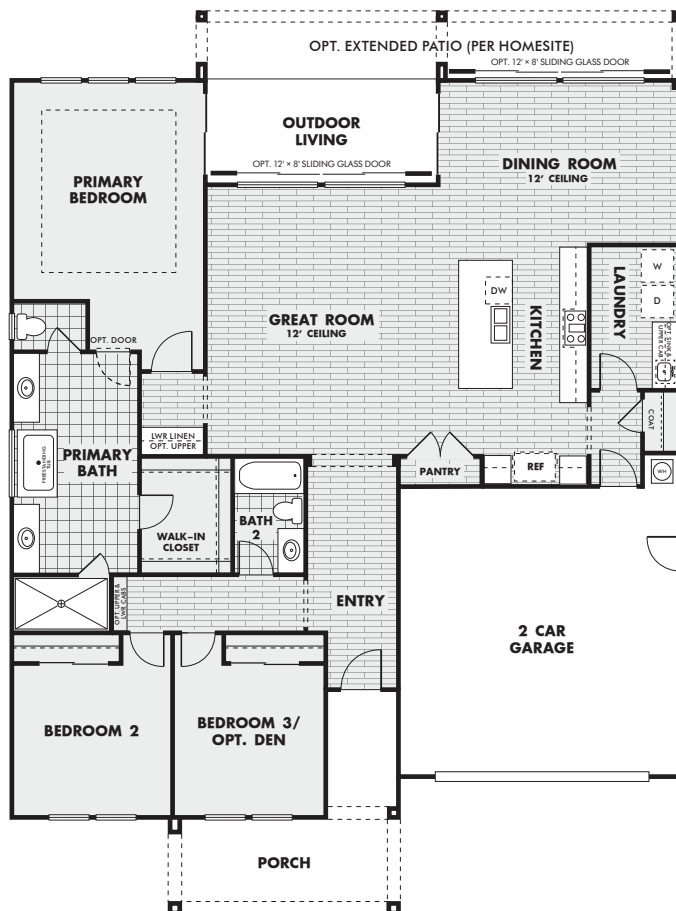


In a continuous effort to improve our product, Blue Mountain reserves the right to make changes or modifications to pricing, standard features, options & other building specifications & dimensions without prior notice. Please see sales representative for details. Square footage is approximate based upon design. 10.14.24

  
delta coves  
ON THE GREAT CALIFORNIA WATERWAYS

**BLUE MOUNTAIN**  
COMMUNITIES

Single Story - 2,050 square feet | 2 - 3 Bedrooms | Den | 2 Baths | 2 Car Garage



### OPTIONAL DEN

# PRELIMINARY



*In a continuous effort to improve our product, Blue Mountain reserves the right to make changes or modifications to pricing, standard features, options & other building specifications & dimensions without prior notice. Please see sales representative for details. Square footage is approximate based upon design. 10.14.24*



delta coves  
ON THE GREAT CALIFORNIA WATERWAYS



# COBALT

BLUE MOUNTAIN  
COMMUNITIES

Single Story - 2,050 square feet | 2 - 3 Bedrooms | Den | 2 Baths | 2 Car Garage



A



B



C

PRELIMINARY



In a continuous effort to improve our product, Blue Mountain reserves the right to make changes or modifications to pricing, standard features, options & other building specifications & dimensions without prior notice. Please see sales representative for details. Square footage is approximate based upon design. 10.14.24

  
delta coves  
ON THE GREAT CALIFORNIA WATERWAYS



## COMMUNITIES

1 = Azure      2 = Indigo      3 = Cyan      4 = Royal      5 = Cobalt



# PRELIMINARY



**delta coves**  
ON THE GREAT CALIFORNIA WATERWAYS