

Real Estate Classified

sacbee.com/homes

sacbee.com/classifieds

COMMUNITY PROFILE

Builder's CEO says Rescue is a sanctuary and a big reason why her company is investing in small El Dorado County town

BY MARK BILLINGSLEY

Rescue has a special place in Stephanie Maclean's heart.

"I loved raising my kids here," the Blue Mountain Communities Chief Executive Office recently told a group of prospective homeowners of Oakhaven, one of two neighborhoods the company is building. "They went to Green Valley Elementary. They went to (Pleasant Valley Middle School). It's an amazing community, and I grew up in the Bay Area. I grew up in Foster City, so for me this was a transition that still gave me a lot of the luxuries and the things that I was accustomed to, you know, but I could still go to the (El Dorado Hills) Town Center. We had nice restaurants. We could go to Target, the movie theaters. It's all right there, but when you came home, you really felt like you were in a different place that was relaxing and that was part of our love of this property. (Rescue) was a place that could be a sanctuary."

Vacaville-based Blue Mountain Communities had more than 100 acres to play with and rather than build four or five homes per acre, Maclean decided to form one- or two-acre lots and build just one home on each because sanctuaries typically don't include neighbors peering down on you.

It's worked with Blue Mountain's Revere at Silver Springs, which has just four lots left. Oakhaven is a

FAST FACTS

Where: 30 miles northeast of Sacramento

Size: 22 square miles

Population: approximately 6,000

County: El Dorado

Established: 1895

Government: County Board of Supervisors

gated neighborhood just across and down the street from Revere at Silver Springs. Oakhaven has a combination of lots sizes between 1.38 and 2.22 acres, said Blue Mountain Communities' Marketing Director Joe Klusnick.

Home plans still available at Revere at Silver Springs include Trinity, Lassen, Sonoma and Shasta. Those four range in size from 2,777 square feet (Lassen) to 3,457 square feet (Shasta). Prices start at \$998,000.

Homes at Oakhaven will range between 3,442 and 4,208 square feet. They're all one-story plans and have interior amenities from Restoration Hardware, Klusnick said. Klusnick said prices start at \$1.4 million for the smaller homes and \$1.5 million for the larger homes.

"All of our homes are move-in ready and people can go to our website to see the 360-degree views from each house," Klusnick said. "The lots are large enough for RV parking and casitas. Both of those are extra options for



Scott Lorenzo

Rescue is in El Dorado County with spectacular views of the Sierra Nevada foothills and range.



Scott Lorenzo

The rural and picturesque community of Rescue is close to freeways and just a short drive to shopping and dining.



Scott Lorenzo

Much of the community is made up of custom homes built on large lots.

buyers."

Klusnick said Blue Mountain Communities is attracting buyers who may have had 10-20 acres and are looking to downsize and younger couples looking for space for kids to

play in a large backyard.

"Rescue still has that rural, small-town feel," Klusnick said. "The Boy Scouts still put on a spaghetti-feed fundraiser each year. But residents are still minutes from what they

want... there are two Safeways, both within a five-minute drive."

Rescue remains semi-rural while still close to amenities such as shopping and Rescue residents are 10-minutes from shop-

ping and restaurants at the El Dorado Hills Town Center, and less than that to Highway 50 to reach business hubs in El Dorado Hills, Folsom, Rancho

SEE COMMUNITY, 2M



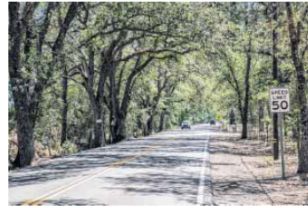
Scott Lorenzo

Residents of Rescue enjoy a country lifestyle but are also a short distance from much larger cities and amenities such as shopping and restaurants.



Scott Lorenzo

The many private roads in Rescue help to keep residential traffic to a minimum, and with the large lots, residents are treated to a serene atmosphere.



Scott Lorenzo

Much of Rescue consists of rural roads and homes with large lots and acreage.

FROM PAGE 1M

COMMUNITY

Cordova and Sacramento.

"Drive east on Highway 50 and you're in the forest," Klusnick said. "You're above the fog and smog and there are great schools. And Folsom Lake is really close, too."

Homes at Revere at Silver Springs and Oakhaven are within easy walking distance to Pleasant Grove Middle School.

Bass Lake Regional Park is a gem for recreational enthusiasts. The man-made lake is a leftover from the Gold Rush when the reservoir was used for mining operations and is on the cusp of beginning an ambitious redesign. Final plans will be submitted to El Dorado County this summer.

The nearly 210-acre project owned and developed by the El Dorado Hills Community Services District includes 142 acres purchased from Rescue Union School District, almost 15 acres from the El Dorado Irrigation District,

42 acres from El Dorado County and approximately 13 acres of parkland given by Parker Development Co., which owns and developed nearby Serrano.

The Bass Lake Regional Park plans include one synthetic grass field, a 2,500-square-foot museum and outdoor education center, an 8,500-square-foot event center, nature trails, playgrounds, bocce ball courts, sand volleyball courts, a small and large dog park and ample parking for the many tournaments expected to be played at the Park.

While no motorized watercraft will be allowed on the lake, there will be a dock and boat ramp for kayaks or paddle boards. Fishing is popular on the lake, but it's catch and release.

No one knows for sure why the town was named Rescue. The leading story suggests that a gold miner named Andrew Hare

struck it rich one day and was "rescued" from poverty.

Rescue, then known as Green Valley, was once a Pony Express stop between Placerville and Folsom and a United States Post Office outpost opened in 1895, inside of a store that was built a year earlier, a Sacramento Bee story from 2022 reported.

Around the time of the town's official start, botanists discovered that Rescue's Pine Hill is home to some of California's rarest plants. But it wasn't until 1977 when the Pine Hill Ecological Preserve was

established. The 403-acre preserve in the heart of Rescue features eight plants, four of which that are not seen anywhere else in California, such as Stebbin's morning glory, Layne's butterweed, Pine Hill flannelbrush and El Dorado bedstraw.

Five of the eight species are listed as threatened and are protected both by state and federal endangered special acts. The Western Slope of El Dorado County contains approximately 10 percent of California's native plants. That botanical diversity makes the area, and Pine

Hill specifically, nationally significant. Elementary students attend either Green Valley or Rescue elementary school, while middle schoolers attend Pleasant Valley Middle School.

High School students attend Ponderosa High School, while some students on the far western side of Rescue may be in Oak Ridge High School's attendance zone. Both schools are in the El Dorado Union High School District.

The resale market in Rescue is limited due to low inventory, which fol-

lows the regional trend.

The lowest list price for a single-family home is \$659,000 for a three-bedroom, two-bathroom home in 1,574 square feet.

The highest list price is \$1.485 million for a three-bedroom, two-bathroom home in 2,289 square feet on almost six acres. The property is terraced at the top. One level features a pool and spa with an adjacent 75-foot-long water slide.

Mark Billingsley is a Carmichael-based freelance writer. Reach him at editorwriter@att.net.



Scott Lorenzo

While driving through the quiet streets of Rescue, one can find calming scenery, wildlife, and splashes of folk art displayed by residents.



Scott Lorenzo

Much of Rescue is made up of spacious lots, streets without sidewalks, and meandering wildlife, yet just a short drive to all of the needed amenities.



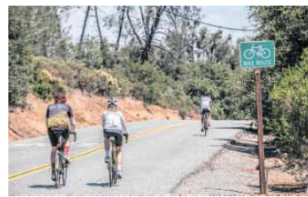
Scott Lorenzo

Skinner Vineyards and Winery is open to the public each Friday, Saturday and Sunday. It was established in 1861.



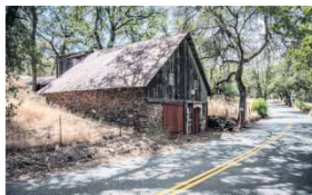
Scott Lorenzo

Rescue is a quiet town, consisting of rural roads, homes with large lots and acreage.



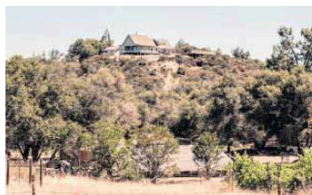
Scott Lorenzo

Rescue has several miles of rural roads, making for safe and scenic rides for bicyclists.



Scott Lorenzo

Rescue has been occupied for more than a century and many interesting, old structures still stand throughout the town.



Scott Lorenzo

The foothills of Rescue offer some residents hilltop views of the area and often of the Sierra Nevada range.



Scott Lorenzo

The town of Rescue was established in 1895 when the U.S. Post Office arrived. The post office moved to this building in 1896, and many structures from the same time period are still standing.