

BLUE MOUNTAIN COMMUNITIES

Where Life Flourishes

Grow Together at Parlin Oaks

Find an idyllic family home that grows with you at Parlin Oaks. Here you'll find the perfect style home to build your family's dream life.

Crafted with loving care, the homes offer the comfortable, modern features you crave, like picturesque front porches ideal for quiet morning cups of coffee, or open, spacious kitchens perfect for making home-cooked dinners while catching up with your loved ones. Family-sized backyards set the perfect scene for your next barbeque, outdoor movie night, or just a fun afternoon in the sun.

Since each Parlin Oaks home is built for maximum energy efficiency, you can have all the conveniences of modern living with a financial and energy savings.

On weekends, explore the beautiful Galt Community Park and sports center across the street, check out the nearby natural creek, or go for a bike ride on the walk and bike path steps outside your front door.

Parlin Oaks is walkable to nearby schools, making the whole family's weekday morning routine easier than ever.

With family-focused features, superior location, and modern craftsmanship, Parlin Oaks brings modern-day necessities to the ideal family residence.

Welcome home to Parlin Oaks.



PARLIN OAKS
CREEKSIDE

by Blue Mountain Communities

Call or Text (707) 317-5740

parlinoaks@bluemountaincommunities.com

990 Katsura Street | Galt, CA 95632

PARLIN OAKS

C R E E K S I D E

by Blue Mountain Communities

PRELIMINARY

RESIDENCE FEATURES AND DETAILS

DISTINCTIVE EXTERIORS

- Beautifully durable architectural composition shingle roofs
- Designer selected exterior color schemes

THOUGHTFUL INTERIORS

- Stylish 2-panel style interior doors
- LVP (throughout first floor), tile, and plush designer carpeting throughout
- Convenient interior laundry with hookups for electric dryers
- 9 foot ceilings throughout first floors
- 3 ¼" flat stock baseboards
- Black lever door handles

GOURMET KITCHENS

- Chrome Kohler pull-out faucet
- Beautiful quartz countertops with 6" backsplash
- Beautiful frameless, shaker cabinets throughout
- Stainless steel sink with waste disposal system
- Refrigerator area plumbed for ice maker
- GE Stainless Steel appliance package, includes gas range, multi-cycle dishwasher, and microwave

ENERGY CONSERVATION

- Energy efficient water heater
- Vinyl dual pane windows with low-e glass
- All homes meet or exceed Title-24 energy requirements
- Water conserving shower heads, faucets, and toilets

LUXURIOUS PRIMARY BATHS

- Polished Kohler chrome faucets, plumbing fixtures, and bath accessories
- Full width vanity mirror
- Shower enclosures with chrome hardware
- Beautiful E-Stone countertops and shower surrounds

SECONDARY BATHROOMS

- Polished chrome Kohler faucets, plumbing fixtures, and bath accessories
- Full width vanity mirror
- Beautiful E-Stone countertops and shower/tub surrounds

PERSONALIZING OPPORTUNITIES

- Opportunity to select upgrade designer collection for countertops, surrounds, and flooring
- A selection of cabinet finishes
- Electrical upgrade options

SMART HOME FEATURES

- Honeywell Pro Smart Thermostat
- Optional centrally located wireless access point

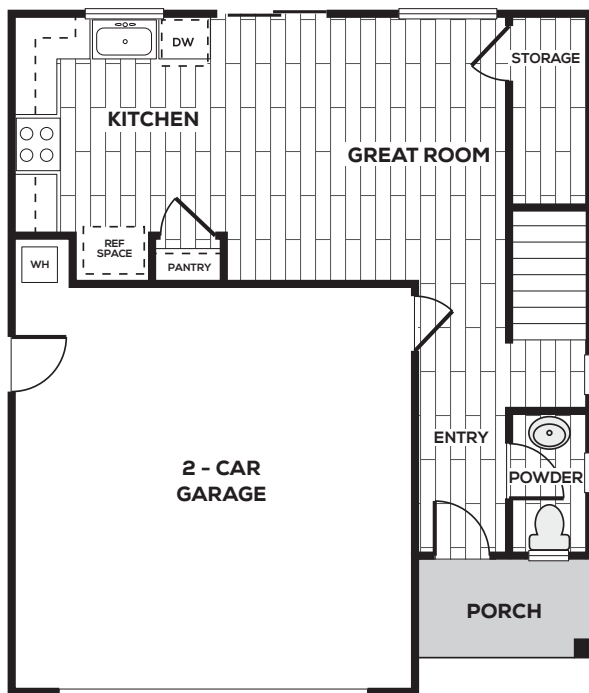
BLUE MOUNTAIN CUSTOMER CARE PACKAGE

- Builder 1 year fit and finish warranty
- Buyer Frame Walk
- New Homeowner Orientation
- 30 day Customer Care Follow-up Visit

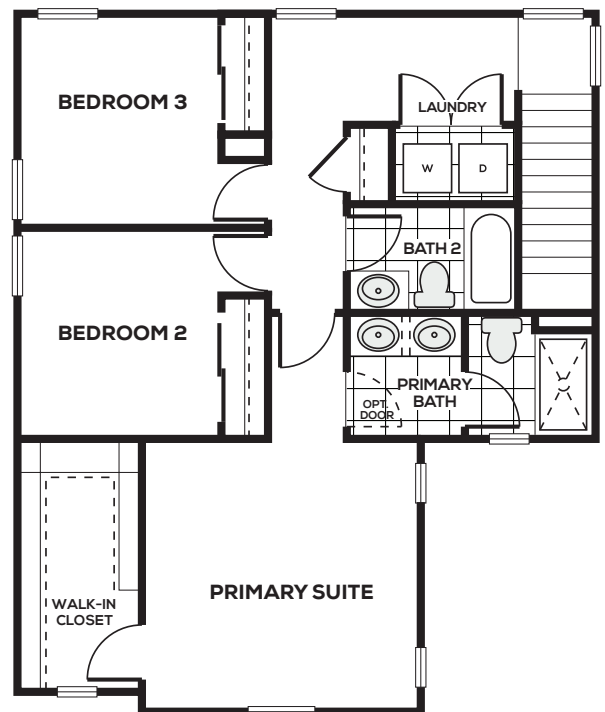


Plans are built with left or right hand garages on all plans. In a continuous effort to improve our product, Blue Mountain reserves the right to make changes or modifications to pricing, standard features, options & other building specifications & dimensions without prior notice. Please see sales representative for details. Square footage is approximate based upon design. 05.04.24

Plan 1 | 1,434 square feet | 3 Bedrooms | 2 Baths | 2 Car Garage



FIRST FLOOR



SECOND FLOOR

BLUE MOUNTAIN
COMMUNITIES

PRELIMINARY

Plans are built with left or right hand garages on all plans. In a continuous effort to improve our product, Blue Mountain reserves the right to make changes or modifications to pricing, standard features, options & other building specifications & dimensions without prior notice. Please see sales representative for details. Square footage is approximate based upon design. 05.04.24



Residence One



Americana (A)



Bungalow (B)



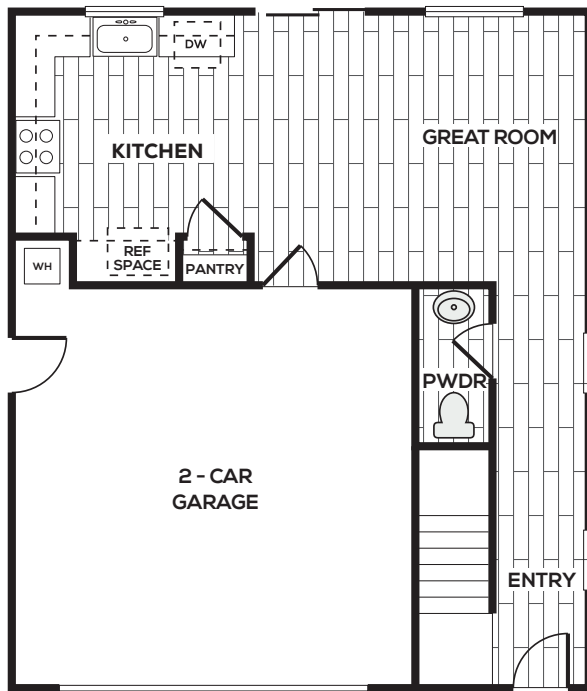
Cottage (C)

PRELIMINARY

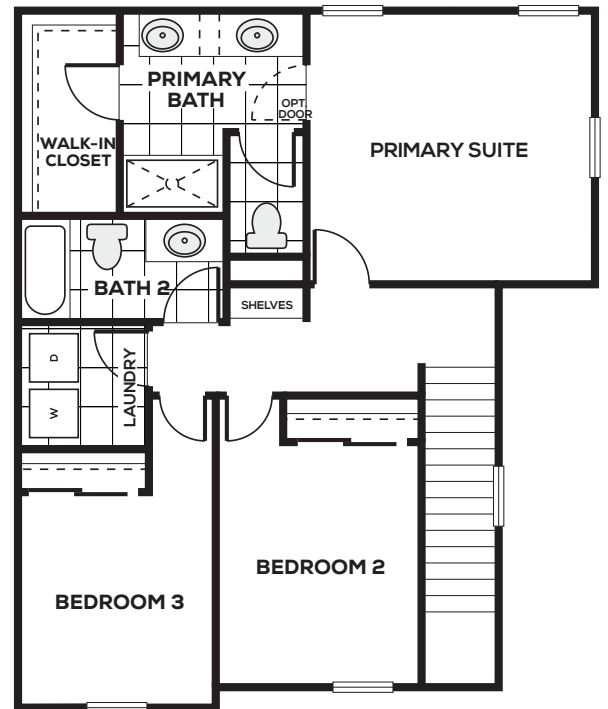


Plans are built with left or right hand garages on all plans. In a continuous effort to improve our product, Blue Mountain reserves the right to make changes or modifications to pricing, standard features, options & other building specifications & dimensions without prior notice. Please see sales representative for details. Square footage is approximate based upon design. 05.04.24

Plan 2 | 1,512 square feet | 3 Bedrooms | 2 Baths | 2 Car Garage



FIRST FLOOR



SECOND FLOOR

BLUE MOUNTAIN
COMMUNITIES

PRELIMINARY

Plans are built with left or right hand garages on all plans. In a continuous effort to improve our product, Blue Mountain reserves the right to make changes or modifications to pricing, standard features, options & other building specifications & dimensions without prior notice. Please see sales representative for details. Square footage is approximate based upon design. 05.04.24



Residence Two



Americana (A)



Bungalow (B)



Cottage (C)

PRELIMINARY



Plans are built with left or right hand garages on all plans. In a continuous effort to improve our product, Blue Mountain reserves the right to make changes or modifications to pricing, standard features, options & other building specifications & dimensions without prior notice. Please see sales representative for details. Square footage is approximate based upon design. 05.04.24



PARLIN OAKS

by Blue Mountain Communities



where life flourishes

BLUE MOUNTAIN
COMMUNITIES

PRELIMINARY

Plans are built with left or right hand garages on all plans. In a continuous effort to improve our product, Blue Mountain reserves the right to make changes or modifications to pricing, standard features, options & other building specifications & dimensions without prior notice. Please see sales representative for details. Square footage is approximate based upon design. 05.04.24

