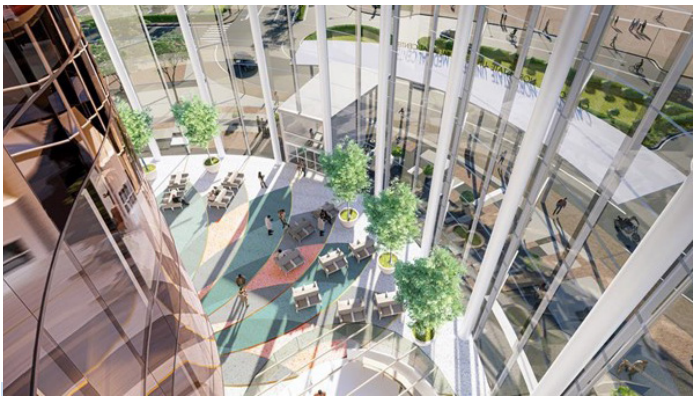


DREAM COMMUTE

MAJOR EMPLOYERS
BECOME OUR
NEW NEIGHBORS AT
PROVENCE IN NATOMAS

Less than 10 miles from downtown Sacramento, the Natomas area has introduced thousands of new homes, renowned community parks, highly-rated schools, and nationally recognized employers, including Health Net - Centene Corporation.

We are excited about welcoming these new “neighbors” to the area:



The Sleep Train Arena project (formerly Arco Arena) is slated to become a teaching hospital and medical school. It is expected to create 3,000 jobs and generate \$4.04 billion in economic output for the region over the next ten years. The project is expected to break ground in 2022.



A third building is coming to the Health Net - Centene's Natomas campus. The Fortune 50 company promises to bring 5,000 high-wage employment opportunities to the area and has filled 2,300 of them. The planned structure, a five-story addition, will pair nicely with the two four-story buildings and envisioned courtyard.

With easy access to downtown Sacramento, the California State Capitol, Amazon Distribution Center, and hundreds of businesses and services, there are an abundance of jobs with a convenient commute. Whether you plan on attending the teaching hospital, working at Health Net - Centene, or one of Sacramento's other employment opportunities, Blue Mountain Communities has the right home for you.



PROVENCE
by Blue Mountain Communities

NEW HOMES AT PROVENCE IN NATOMAS

Attractive pricing • Square footage ranging from 1,394 to 2,298
3 to 4 bedrooms • 2.5 to 3.5 bathrooms • 2-car garages
On-site pool • Walkability to area restaurants, parks, and shops

BLUE MOUNTAIN
COMMUNITIES

📞 916.496.4074 💬 916.936.5516 📍 4478 Saone Walk, Sacramento CA 95834

BlueMountainCommunities.com