

# Real Estate

BACKYARD SPECIAL  
Shelter-in-place  
projects. M4

SAN FRANCISCO CHRONICLE AND SFCHRONICLE.COM | Sunday, September 13, 2020 WB/PN

SPONSORED CONTENT

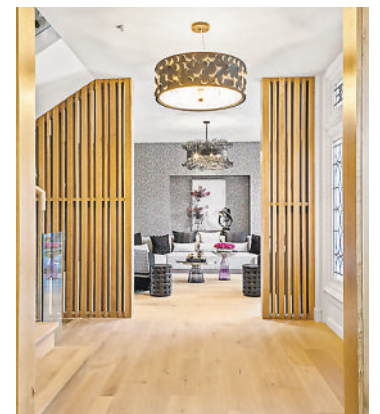
## Building a series of new homes Blue Mountain Communities enhance lifestyles M6



ROCHELLE PETTIT

Floor plans with flexible and comfortable spaces can be found in each building at Provence in Natomas by Blue Mountain Communities.

**Sound Off:**  
How to start  
your career as  
a Realtor. M2



William Truong

### Hot Property

The entertaining level hallways at 730 Euclid Ave. are decorated with white oak accents.

N1



### PROPERTY POST

Elegant Gold Coast Residence with Golden Gate and Bay Views from Every Level


H3

Sponsored by: Sotheby's  
INTERNATIONAL REALTY



## Quick Move-In Homes Now Available.

Livermore condos from the \$800s • SageLivermore.com • 1-866-OWN-SHEA

 Sales: Shea Homes Marketing Company (CalDRE #01378646); Construction: Shea Homes Limited Partnership (CSLB #855368). Equal housing opportunity.





# COVER STORY

## SPONSORED CONTENT



PHOTOGRAPHS BY ROCHELLE PETTIT

Above: LVP wood-style flooring, contemporary lighting, and expansive dual-pane windows are just the start of sought-after, included interior features at all Blue Mountain Communities. Below: Paving the way for unique homes in unique locations, Santa Rosa's Village Station features row home architecture built around spacious courtyards.

# New homes bring new opportunities in California

Like many things in 2020, the California real estate market has been unpredictable. With the changing environment also comes an opportunity for many people to own their first home, trade up, or even trade out to a location that is more suited to their new-found lifestyle.

This is where Blue Mountain Communities is paving the way for new home construction throughout Northern California. Speaking with their sales director and marketing director brought to light a whole new way of finding real value in undiscovered locations with variety in conveniences, recreation, and

commutability.

Blue Mountain Communities has been known for building several popular neighborhoods throughout the region. Currently, available homes are offered at Village Station in Santa Rosa, Provence in Natomas and Carnelian in Granite Bay.

Each community's location offers unique benefits. The Santa Rosa community is a five-minute walk from Historic Railroad Square and downtown. In Natomas, the community is a short drive between downtown Sacramento and the airport. In Granite Bay, residents will live just down the street from Folsom Lake with hiking, biking,





# COVER STORY

## SPONSORED CONTENT



ROCHELLE PETTIT

This kitchen features a center island, Shaker cabinetry, and stainless steel appliances which represents the luxury and high-end finishes found at Carnelian at Granite Bay by Blue Mountain Communities.

### Details

**Provence:** Minutes from I-5, I-80, downtown Sacramento, and the Sacramento International Airport, Provence will feature more than 180 homes when complete. Three to five bedroom home designs offer 1,394 to 2,298 square feet. Its Natomas location is known for extensive parks, highly rated schools, shopping, and dining.

**Carnelian:** Located in the desirable community of Granite Bay, Carnelian offers 28 residences in a gated neighborhood. These luxurious duets feature a variety of architectural styles, three to five bedrooms and multigenerational options. With an easy commute to employment centers like Roseville, Folsom, and El Dorado Hills, residents can still enjoy endless recreation just down the street at Folsom Lake.

**Village Station:** Located in the vibrant city of Santa Rosa in a SMART Train Quiet Zone, this community features three to four bedroom row houses. A total of 110 homes will be built in the community, 58 of which have already been sold. Thoughtfully planned for a lifestyle experience, the community has unique courtyards intermingled with the homes. Shared amenities include picnic areas, a dog park, tot lot, and bocce ball court.

and walking trails, and only a few miles from the Westfield Galleria shopping center.

"One of the most interesting elements of these communities, besides being beautiful places to live, is that they represent a unique approach to building in their individual areas," stated Joe Klusnick, marketing director for Blue Mountain Communities. "We have pioneered row homes and luxury duets in Santa Rosa and Granite Bay, respectively."

With the right location selected, Blue Mountain Communities creates a neighborhood plan for an environment where people can live and thrive.

"A lot of our communities include designated, shared areas. Whether it be community gardens, pools, barbecue areas, tot lots, bocce courts, or dog parks, our vision is to create livable spaces and enjoyment right outside your door," said Will Scott, sales director for Blue Mountain Communities.

Blue Mountain Communities is committed to homes designed for today's lifestyles. Many homes offer home offices,

extra storage spaces, multi-generational options, and lofts or bonus rooms that can be converted into home theaters, playrooms, or at-home classrooms.

"Our floorplans are not pulled off 'the shelf.' A team of expert architects, engineers, and designers collaborate to identify the best configurations to create a comfortable, flexible living environment specific to each community," continued Scott.

As part of the parent company, Blue Mountain Enterprises, they are able to internally source and install plumbing and HVAC systems for every home.

"This gives us more quality control and our homebuyers more peace-of-mind," commented Scott.

Another distinctive company attribute is Blue Mountain's included features. Every home is aesthetically appointed with granite countertops, tile or LVP flooring, contemporary styled fixtures, and stainless steel appliances.

Learn more at [www.blue-mountaincommunities.com](http://www.blue-mountaincommunities.com).