



A Delta Dream In Your Backyard

Wake up every day to amazing views and uplifting delta breezes. Located in the Delta Coves master-plan on Bethel Island, this is an extraordinary opportunity to experience a new style of living with resort-inspired luxury.

At the water's edge, each residence's backyard is appointed with a private dock. From here you can boat on the Delta's hundreds of miles of breathtaking waterways and be on fast water in under 30 minutes. Enjoy endless boating, fishing, and water sports with new discoveries around every bend. Explore the Sacramento or San Joaquin Rivers out to the Pacific Ocean, creating lasting memories with friends and family. Then return to the comfort of home, only steps from shore.

Land lovers rejoice as well. Enjoy bike rides, barbecues, gatherings, fitness, lawn games, and more at the Island Camp Club located within the immediate neighborhood.

Start living your dream now. About an hour's drive from the San Francisco Bay, Silicon Valley, or Napa Valley; Delta Coves serves as the perfect home or "home away from home" when your ambition for adventure or desire for tranquility calls. Relax, play, and flourish at your own waterfront residence.

Where will your Delta dream take you?

Call 925.503.7314 or Text 707.880.0157
deltacoves@bluemountaincommunities.com
44 Seaward Court | Bethel Island, CA 94561

BLUE MOUNTAIN
COMMUNITIES

RESIDENCE FEATURES AND DETAILS

BLUE MOUNTAIN CUSTOMER CARE PACKAGE

- Builder 1-year fit and finish warranty
- 2-10 Homebuyer Warranty
- Buyer Frame Walk
- Buyer Touch-up Walk
- New Homeowner Orientation
- 30-day Customer Care Follow-up Visit

DISTINCTIVE EXTERIORS

- Designer selected exterior color schemes with professional paint by Kelly Moore
- Nest Hello video doorbell
- Beautiful durable composition roofs
- Garage door with Lift Master opener (WiFi with battery back up)

THOUGHTFUL INTERIORS

- Stylish two-panel, 8' interior doors
- 18"x18" tile and designer carpeting throughout
- Convenient interior laundry rooms with gas dryer hook ups
- 9 foot ceilings
- 3 ¼ inch Colonial baseboards
- Brushed nickel lever door handles
- Lower cabinet in Laundry Room with E-Stone tops to coordinate with other locations throughout the home
- Ceiling fans in Living Room and Master Bedroom
- Flat screen pre-wire in Living Room and Master Bedroom
- USB outlets in Kitchen (1) and Master Bedroom (2)
- Wired for data and cable in all Bedrooms
- Professional paint by Kelly Moore

GOURMET KITCHENS

- Stainless steel Moen pull-down faucet
- Stylish quartz countertops with choice of three colors
- Beautiful cabinets with brushed nickel pull style hardware and choice of four stain colors
- Stainless steel farm sink with Moen 1/2 hp disposal
- Refrigerator area plumbed for ice maker
- Stainless steel GE appliance package including self-cleaning gas range, microwave range hood, and multi-cycle dishwasher

ENERGY CONSERVATION

- Dual-zone HVAC with Nest E thermostat downstairs and Honeywell thermostat upstairs
- Energy efficient Rinnai tankless water heater with recirculating pump and push button for on-demand hot water
- Vinyl dual pane windows with low-e glass
- All homes meet or exceed Title-24 energy requirements
- Moen water conserving shower heads and faucets
- Water conserving Gerber toilets
- All LED lighting throughout

PRIVATE MASTER SUITES

- Moen brushed nickel faucets and plumbing fixtures
- Brushed nickel shower enclosures
- Full width vanity mirror
- Glamorous E-Stone on vanities and master shower
- Thoughtfully selected vanity lights

SECONDARY BATHROOMS

- Beautiful E-Stone vanities
- Moen brushed nickel faucets and plumbing fixtures
- Full vanity width mirror
- Fiberglass shower/tub surrounds (Bath 2)
- E-Stone shower surrounds (Bath 3)

PERSONALIZING OPPORTUNITIES

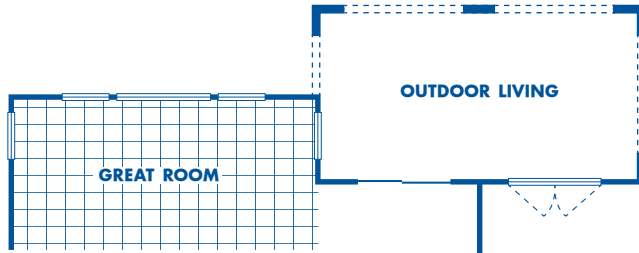
- Optional 2.610kw solar system
- Beautifully selected paint grade color cabinet upgrades
- Appliance package upgrades
- Numerous electrical and plumbing fixture upgrades
- Innovative security system
- Lighting fixture upgrades throughout the home
- Upgraded interior door and hardware options
- Upgraded framed bath vanity mirror
- Customizations for countertops, surrounds, and flooring that can be selected at the Design Center



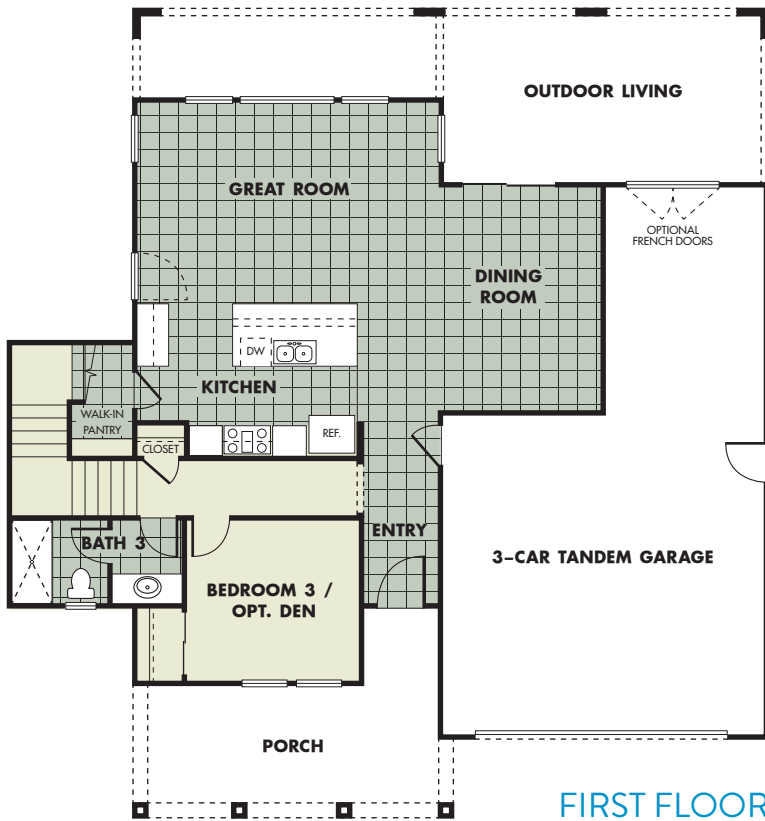
AZURE



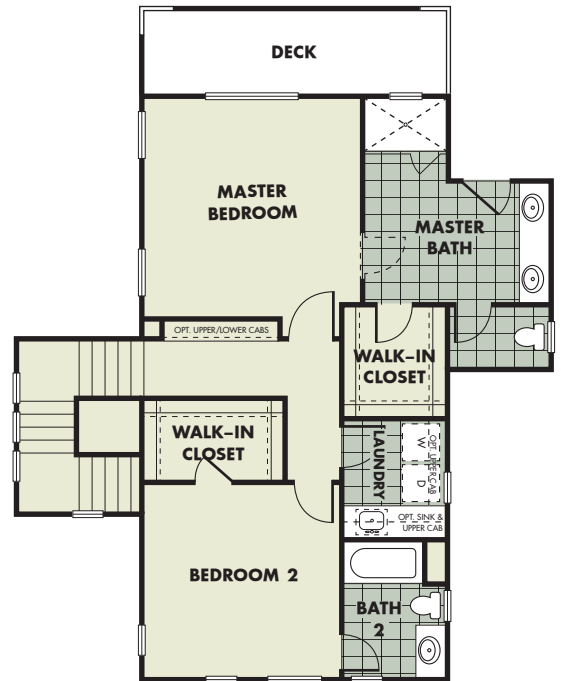
1,864 square feet | 3 Bedrooms | 3 Baths | 3 Car Tandem Garage



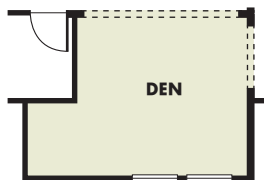
first floor
ALTERNATE*



FIRST FLOOR



SECOND FLOOR



OPTIONAL DEN

Alternate plans only
available on corner homesites

PRELIMINARY



In a continuous effort to improve our product, Blue Mountain reserves the right to make changes or modifications to pricing, standard features, options & other building specifications & dimensions without prior notice. Please see sales representative for details. Square footage is approximate based upon design.

BLUE MOUNTAIN
COMMUNITIES

AZURE



1,864 square feet | 3 Bedrooms | 3 Baths | 3 Car Tandem Garage



A



B



C

PRELIMINARY



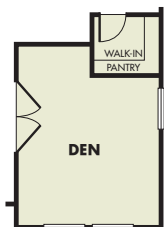
In a continuous effort to improve our product, Blue Mountain reserves the right to make changes or modifications to pricing, standard features, options & other building specifications & dimensions without prior notice. Please see sales representative for details. Square footage is approximate based upon design.

BLUE MOUNTAIN
COMMUNITIES

INDIGO



2,143 square feet | 4 Bedrooms | 3 Baths | 3 Car Tandem Garage



OPTIONAL DEN

PRELIMINARY



In a continuous effort to improve our product, Blue Mountain reserves the right to make changes or modifications to pricing, standard features, options & other building specifications & dimensions without prior notice. Please see sales representative for details. Square footage is approximate based upon design.

BLUE MOUNTAIN
COMMUNITIES

INDIGO



2,143 square feet | 4 Bedrooms | 3 Baths | 3 Car Tandem Garage



A



B



C

PRELIMINARY



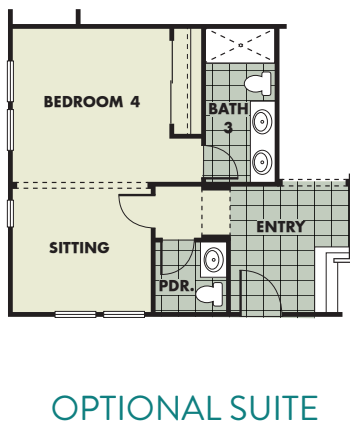
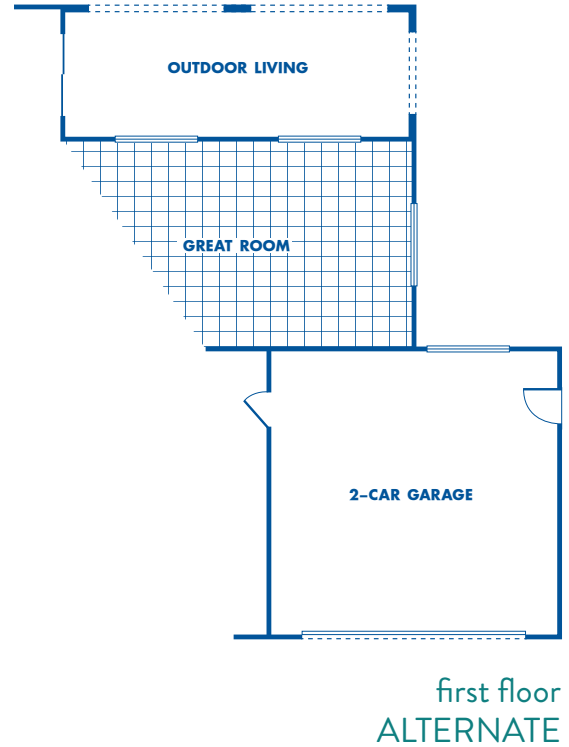
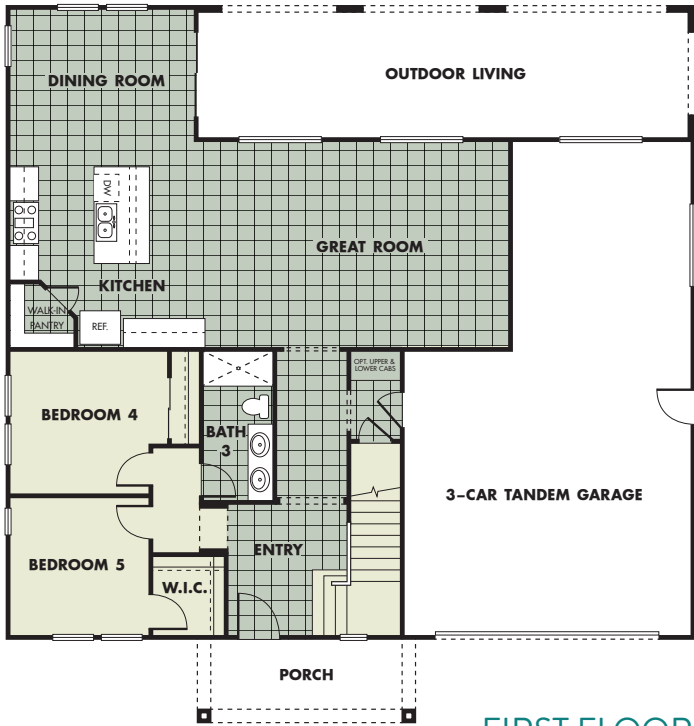
In a continuous effort to improve our product, Blue Mountain reserves the right to make changes or modifications to pricing, standard features, options & other building specifications & dimensions without prior notice. Please see sales representative for details. Square footage is approximate based upon design.

BLUE MOUNTAIN
COMMUNITIES

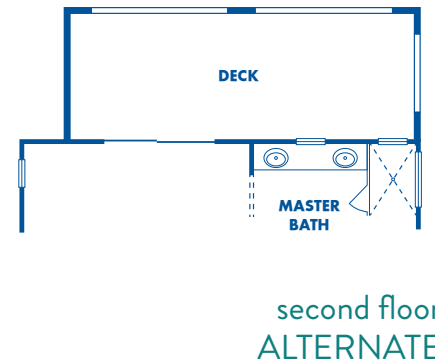
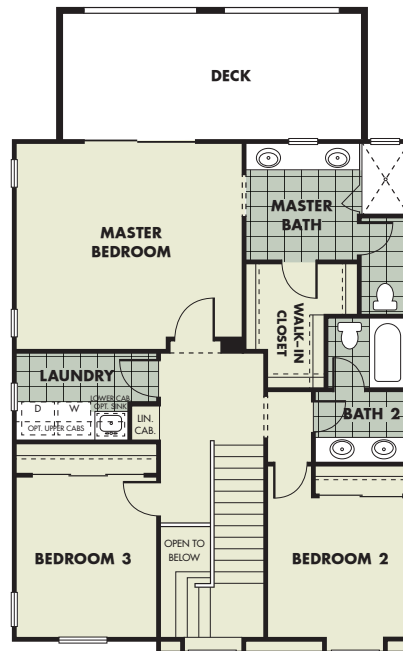
CYAN



2,286 square feet | 5 Bedrooms | 3 Baths | 3 Car Tandem Garage



Alternate plans only
available on corner homesites



PRELIMINARY



In a continuous effort to improve our product, Blue Mountain reserves the right to make changes or modifications to pricing, standard features, options & other building specifications & dimensions without prior notice. Please see sales representative for details. Square footage is approximate based upon design.

BLUE MOUNTAIN
COMMUNITIES

CYAN



2,286 square feet | 5 Bedrooms | 3 Baths | 3 Car Tandem Garage



A



B



C

PRELIMINARY



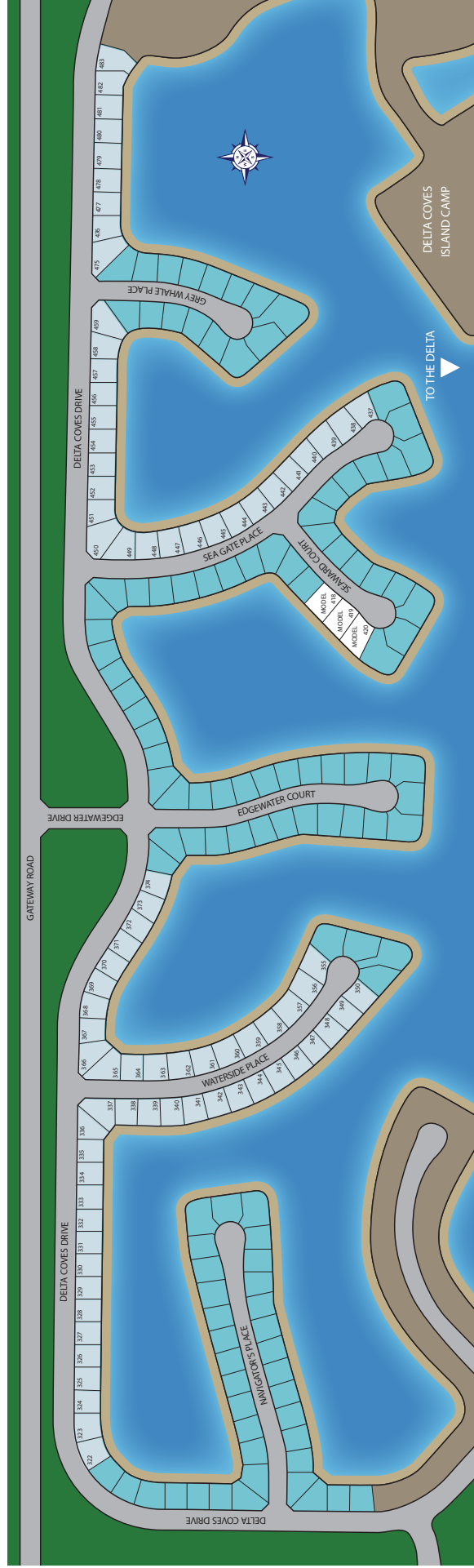
In a continuous effort to improve our product, Blue Mountain reserves the right to make changes or modifications to pricing, standard features, options & other building specifications & dimensions without prior notice. Please see sales representative for details. Square footage is approximate based upon design.

BLUE MOUNTAIN
COMMUNITIES



delta coves

ON THE GREAT CALIFORNIA WATERWAYS



 Blue Mountain Communities

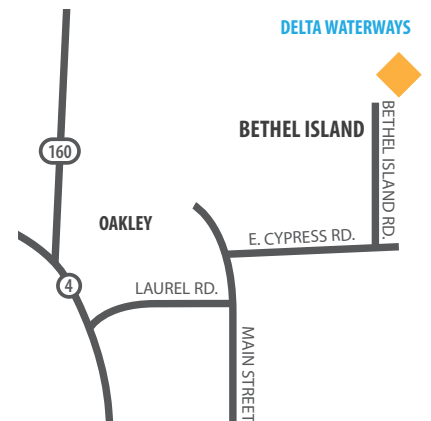
PRELIMINARY

 In a continuous effort to improve our product, Blue Mountain reserves the right to make changes or modifications to pricing, standard features, options & other building specifications & dimensions without prior notice. Please see sales representative for details. Square footage is approximate based upon design.04.15.19

BLUE MOUNTAIN
COMMUNITIES



925.503.7314 | Text: 707.880.0157
deltacoves@bluemountaincommunities.com
44 Seaward Court | Bethel Island, CA 94561
www.BlueMountainCommunities.com



The Advantage Group CA DRE #01187063



In a continuous effort to improve our product, Blue Mountain reserves the right to make changes or modifications to pricing, standard features, options & other building specifications & dimensions without prior notice. Please see sales representative for details. Square footage is approximate based upon design.

BLUE MOUNTAIN
COMMUNITIES