



An Ideal Place to Call Home

The Commons by Blue Mountain Communities

Known as "Steinbeck Country," for the California novelist, Salinas is a perfectly tucked away town that serves as the backdrop for The Commons by Blue Mountain Communities.

New families will love to see their dreams bear fruit in this diverse locale, filled to the brim with creative, fun things to do and a local vibe that reflects it all.

The quintessential hidden gem, the city of Salinas is known for its rich agricultural history. Residents love the farmer's markets and bountiful landscapes surpassed only by the wonder of the Pacific Coastlands.

Entertainment options abound. Wine enthusiasts are quick to point out the River Road Wine Trail. Salinas also hosts one of the largest rodeo events in California. And the drive into the Santa Lucia Highlands is among the most scenic you will ever enjoy.

Find yourself at home in The Commons.

Residence Features and Details

DISTINCTIVE EXTERIORS

- Beautifully durable composition roofs
- Long panel garage doors with wifi garage door opener
- Designer selected exterior color schemes
- Covered front porch (varies per plan)
- Quality, all-wood rear and side yard fencing
- Variety of masonry accents
- August video doorbell

THOUGHTFUL INTERIORS

- Stylish Cambridge style interior door
- Luxury vinyl plank flooring throughout
- Plush carpeting in designer colors
- Convenient interior laundry rooms with gas dryer hook ups
- 9 foot ceilings
- 3 ¼ inch Colonial baseboards
- Lever door handles

PRIVATE MASTER SUITES

- Exquisite Moen, polished chrome faucets and plumbing fixtures
- Clear glass shower enclosures
- Full width vanity mirror
- Glamorous, E-Stone on vanities and master shower
- Thoughtfully selected vanity lights
- Elongated toilets

GOURMET KITCHENS

- Stylish granite countertops with three exceptional colors to choose from
- Your choice of four beautiful cabinet stain colors
- Polished chrome Moen pull-out faucet
- Stainless steel sink with waste disposal system
- Refrigerator area plumbed for ice maker

GOURMET KITCHENS (CONT)

- Optional knobs or pull hardware
- Stainless steel GE appliance package including self-cleaning gas range, microwave range hood, and multi-cycle dishwasher

ENERGY CONSERVATION

- Solar ready homes
- Honeywell wifi thermostat
- Energy efficient tankless water heater
- Vinyl dual pane windows with low-e glass
- All homes meet or exceed Title 24 energy requirements
- Moen, water conserving shower heads, faucets, and toilets

SECONDARY BATHROOMS

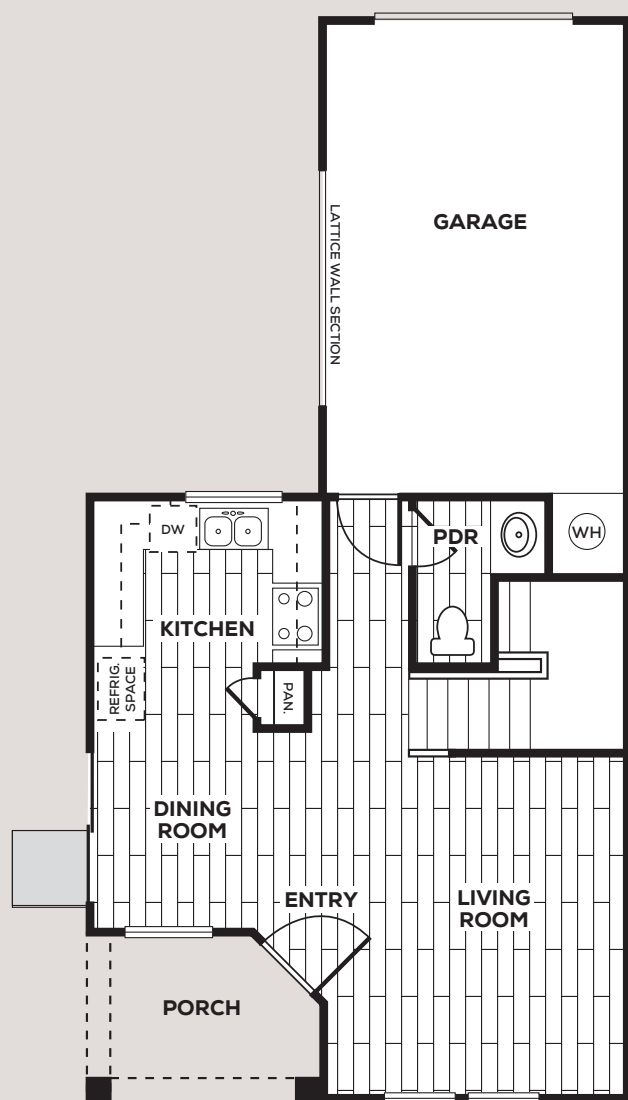
- Easy maintenance shower/tub surrounds
- Beautiful E-Stone countertops
- Moen, polished chrome faucets and plumbing fixtures
- Full vanity width mirror
- Conveniently located medicine cabinet

PERSONALIZING OPPORTUNITIES

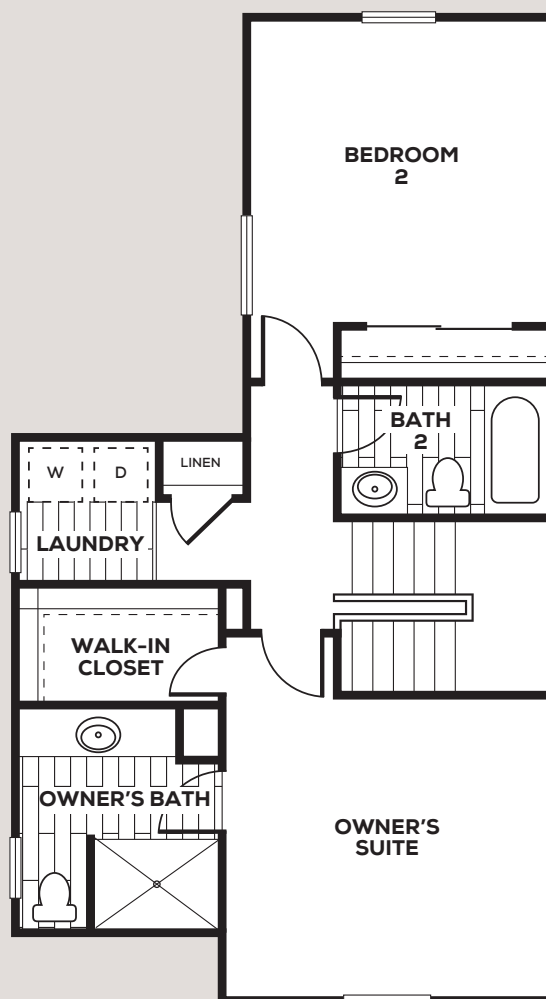
- Upgrade package options available
- Upgrade cabinet to a beautifully selected paint grade colors
- Upgraded appliance packages
- Numerous electrical and plumbing fixture upgrades
- Innovative security system
- Lighting fixture upgrades throughout the home
- Upgraded interior door options

PRELIMINARY





FIRST FLOOR



SECOND FLOOR

PRELIMINARY





Residence One 1,123 square feet

2 Bedrooms | 2.5 Baths | Single Car Garage



A ELEVATION



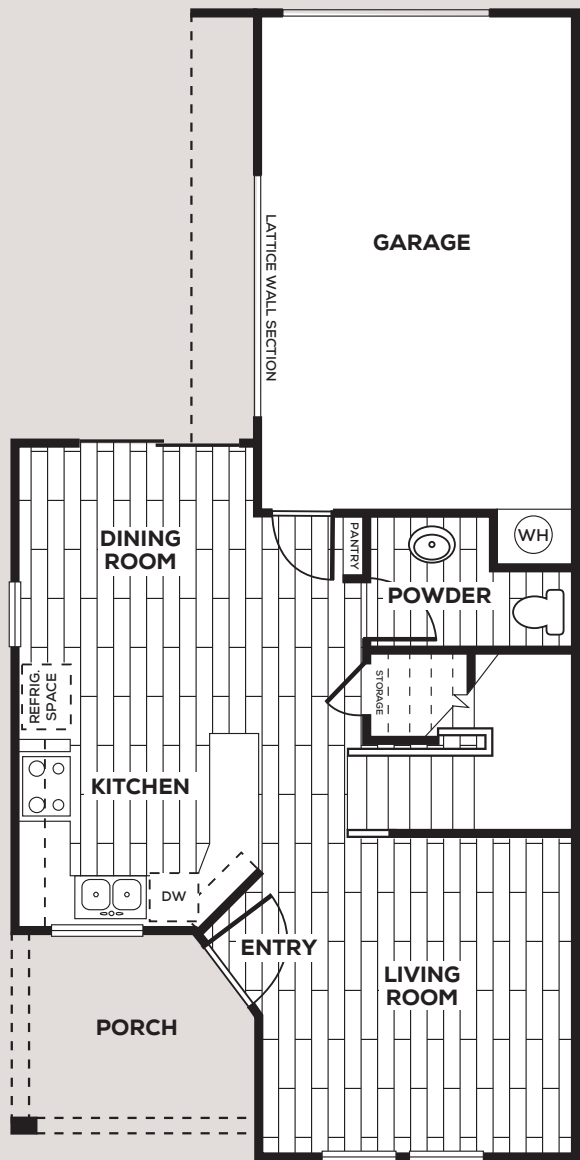
B ELEVATION

PRELIMINARY

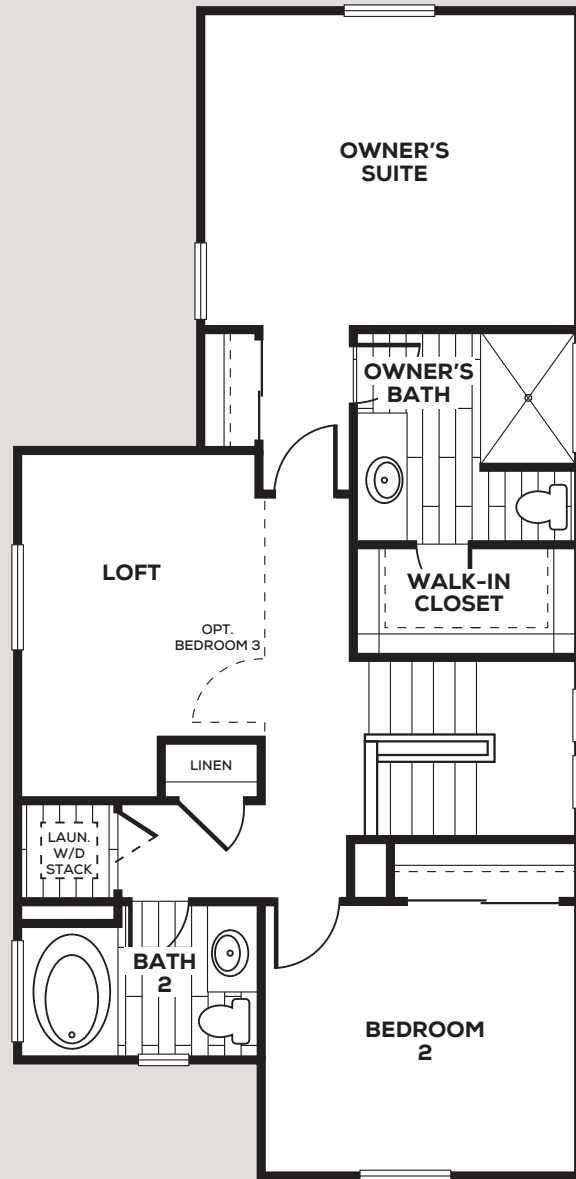


In a continuous effort to improve our product, Blue Mountain reserves the right to make changes or modifications to pricing, standard features, options & other building specifications & dimensions without prior notice. Please see sales representative for details. Square footage is approximate based upon design. 08.23.17

BLUE MOUNTAIN
COMMUNITIES



FIRST FLOOR



SECOND FLOOR

PRELIMINARY



Residence Two 1,279 square feet

2 Bedrooms | Loft | 2.5 Baths | Single Car Garage



A ELEVATION



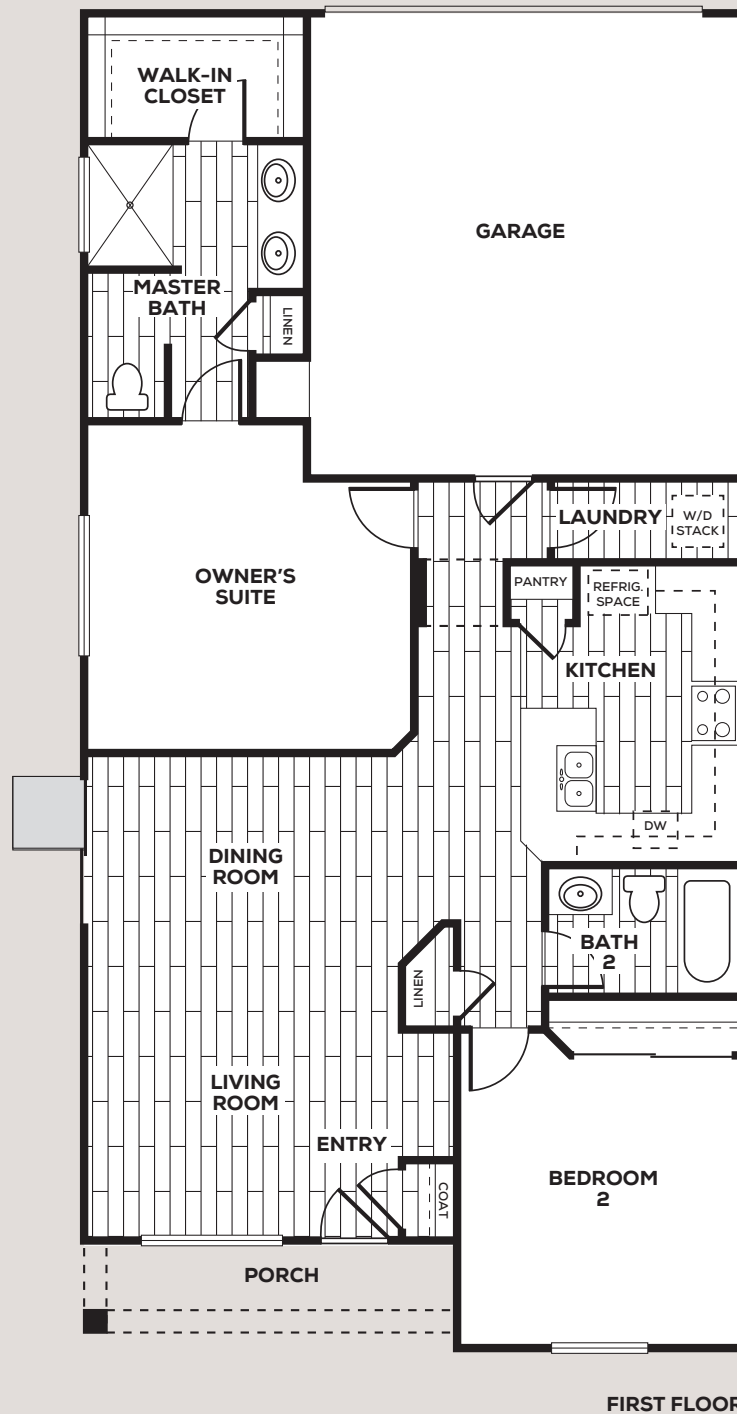
B ELEVATION

PRELIMINARY



In a continuous effort to improve our product, Blue Mountain reserves the right to make changes or modifications to pricing, standard features, options & other building specifications & dimensions without prior notice. Please see sales representative for details. Square footage is approximate based upon design. 08.23.17

BLUE MOUNTAIN
COMMUNITIES



FIRST FLOOR

PRELIMINARY



Residence Three 1,138 square feet

2 Bedrooms | 2 Baths | Single Car Garage



A ELEVATION



B ELEVATION



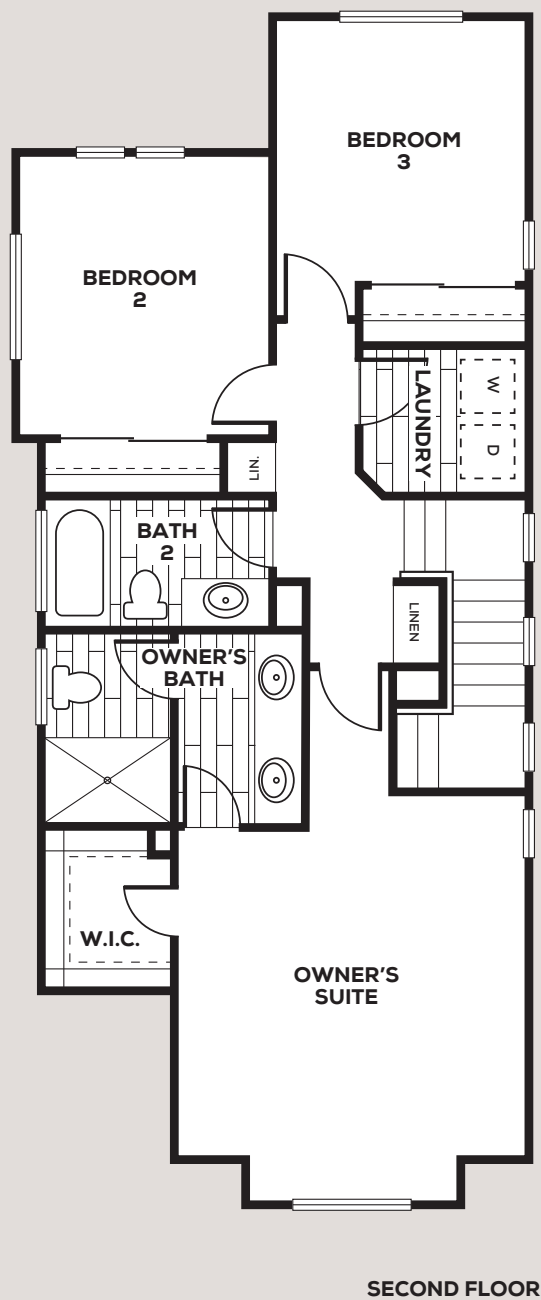
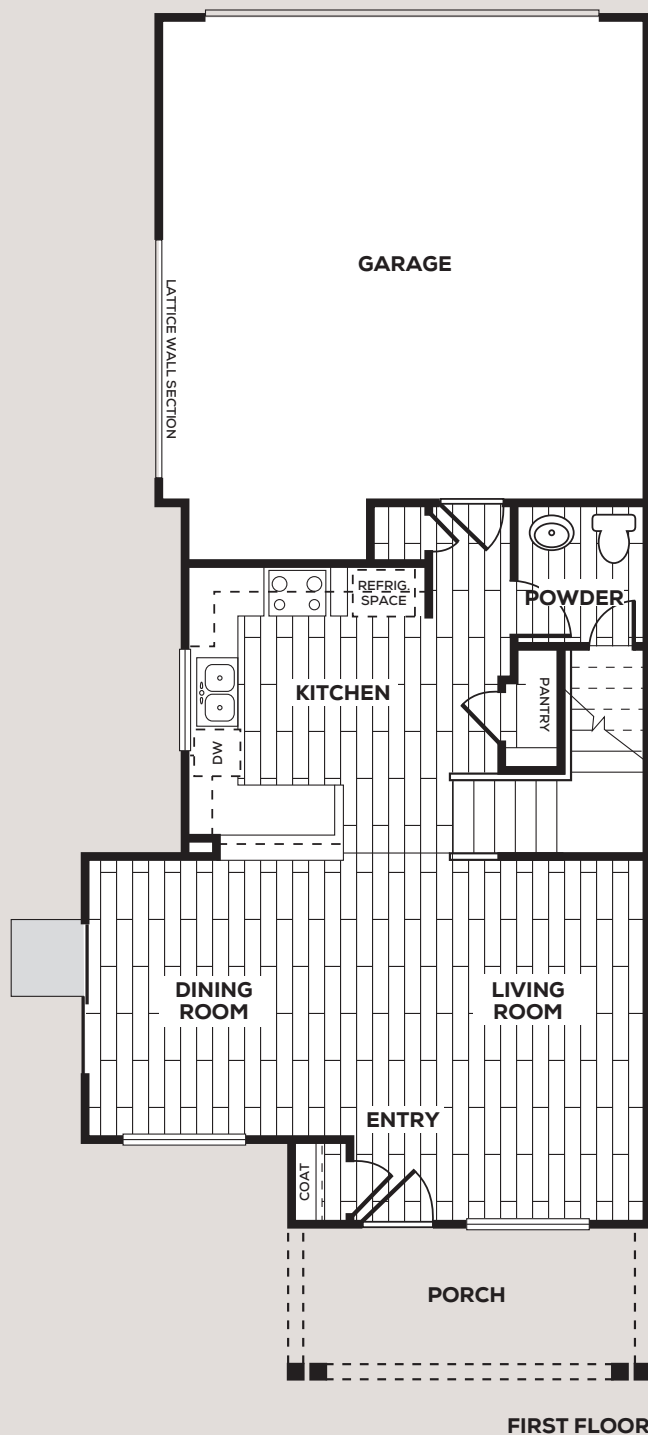
C ELEVATION

PRELIMINARY



In a continuous effort to improve our product, Blue Mountain reserves the right to make changes or modifications to pricing, standard features, options & other building specifications & dimensions without prior notice. Please see sales representative for details. Square footage is approximate based upon design. 08.23.17

BLUE MOUNTAIN
COMMUNITIES



PRELIMINARY



Residence Four 1,378 square feet

3 Bedrooms | 2.5 Baths | 2 Car Garage



A ELEVATION



B ELEVATION



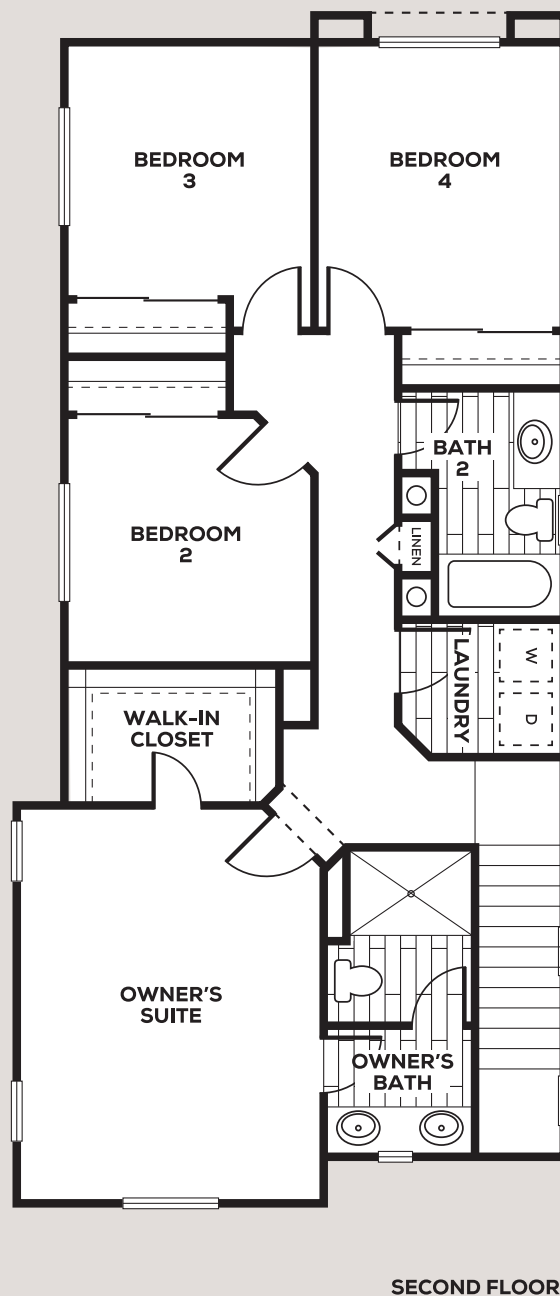
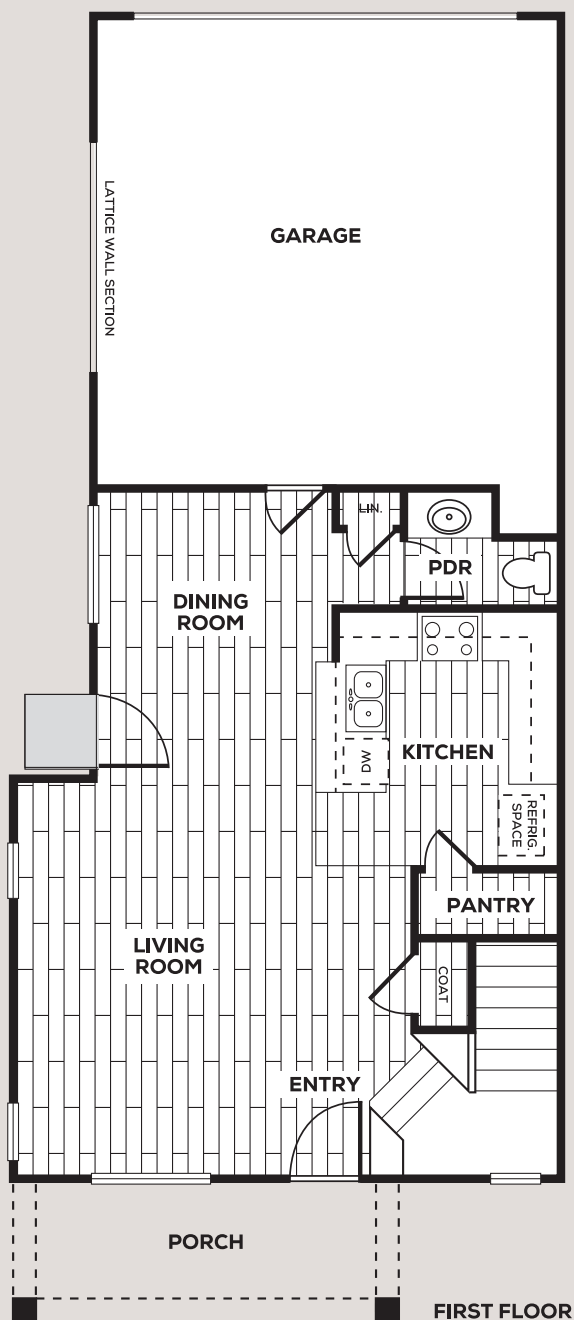
C ELEVATION

PRELIMINARY



In a continuous effort to improve our product, Blue Mountain reserves the right to make changes or modifications to pricing, standard features, options & other building specifications & dimensions without prior notice. Please see sales representative for details. Square footage is approximate based upon design. 08.23.17

BLUE MOUNTAIN
COMMUNITIES



PRELIMINARY



Residence Five 1,578 square feet

4 Bedrooms | 2.5 Baths | 2 Car Garage



A ELEVATION



B ELEVATION



C ELEVATION

PRELIMINARY





PRELIMINARY



In a continuous effort to improve our product, Blue Mountain reserves the right to make changes or modifications to pricing, standard features, options & other building specifications & dimensions without prior notice. Please see sales representative for details. Square footage is approximate based upon design. 08.23.17

BLUE MOUNTAIN
 COMMUNITIES



PRELIMINARY



In a continuous effort to improve our product, Blue Mountain reserves the right to make changes or modifications to pricing, standard features, options & other building specifications & dimensions without prior notice. Please see sales representative for details. Square footage is approximate based upon design. 07.28.17

BLUE MOUNTAIN
COMMUNITIES