



THE Cottages

BY BLUE MOUNTAIN COMMUNITIES

Modern Living Meets Historic Agricultural Grandeur at The Cottages by Blue Mountain Communities

“Fun, relaxed, and rich with value” are the words most often used to describe Hollister. Named after successful rancher and entrepreneur William Welles Hollister, this is a place where locals enjoy plentiful fruit and vegetables year-round. There’s no doubt that some of the best farm-to-fork meals are produced right here in the center of San Benito County.

With a comfortable climate, similar to Italy and Greece, Hollister is home to many picturesque vineyards. The famed San Benito Wine Trail is great for stocking up on local olive oils, produce, and of course wine. The real charm lies not only in the area’s pace of life and natural beauty, but also the conveniences of modern living.

Neighboring the Pacific Coastline, day-trips to San Francisco, the Monterey Peninsula, and other coastal landmarks are within easy reach. Adding to the beauty is the nearby Pinnacle Historic Park, sure to bring out the explorer and naturalist in everyone.

They say home is where the soul lives abundantly, living at The Cottages will make you feel both abundant and at home.

DISTINCTIVE EXTERIORS

- Beautifully durable tile roofs
- Drought tolerant front yard landscaping maintained with automatic sprinklers with rain sensitive smart irrigation
- Long panel garage doors with wifi garage door opener
- Designer selected exterior color schemes
- Covered front porch (varies per plan)
- Quality, all-wood rear and side yard fencing
- Variety of masonry accents
- August doorbell

THOUGHTFUL INTERIORS

- Stylish 8' Cambridge interior doors
- Stunning hand-set tile
- Plush carpeting in designer colors
- Convenient interior laundry rooms with gas dryer hook ups
- 9 foot ceilings
- 3 ¼ inch Colonial baseboards
- Designer selected countertop options
- Lever door handles

PRIVATE MASTER SUITES

- Exquisite Moen, polished chrome faucets and plumbing fixtures
- Clear glass shower enclosures
- Full width vanity mirror
- Distinctive tile bath flooring
- Glamorous, E-Stone on vanities and master shower/tub surrounds
- Thoughtfully selected vanity lights
- Elongated toilets

GOURMET KITCHENS

- Stylish granite countertops with three exceptional colors to choose from
- Your choice of four beautiful cabinet stain colors

GOURMET KITCHENS (CONT.)

- Polished chrome Moen pull-out faucet
- Stainless steel sink with waste disposal system
- Refrigerator area plumbed for ice maker
- Designer selected tile flooring throughout the kitchen
- Optional knobs or pull hardware
- Stainless steel GE appliance package including self-cleaning gas range, microwave range hood, and multi-cycle dishwasher

ENERGY CONSERVATION

- Solar ready homes
- Honeywell wifi thermostat
- Energy efficient tankless water heater
- Vinyl dual pane windows with low-e glass
- All homes meet or exceed Title 24 energy requirements
- Dual zone heat and air conditioning (two-story homes only)
- Water conserving Moen shower heads, Moen faucets, and toilets

SECONDARY BATHROOMS

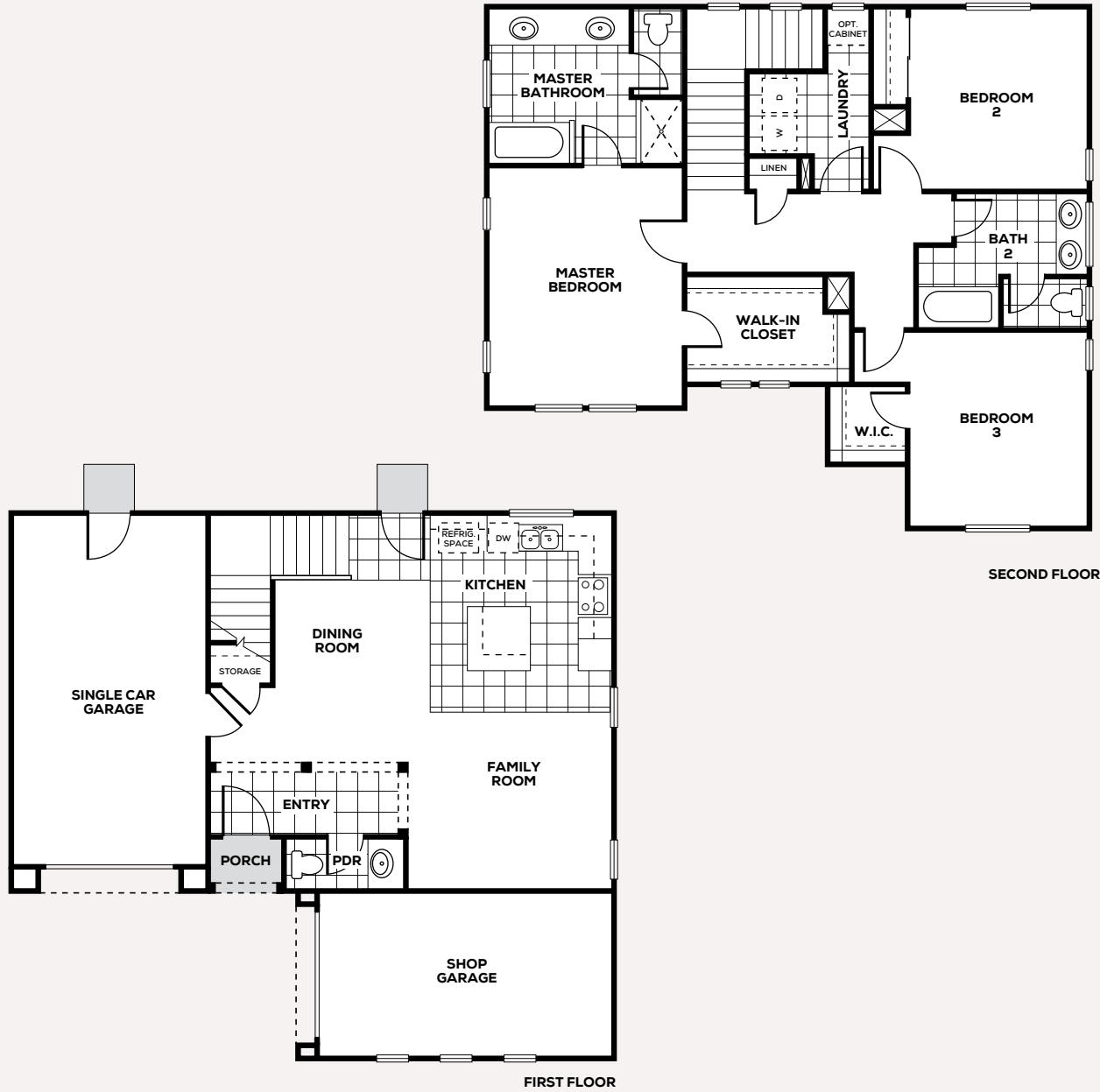
- Easy maintenance shower/tub surrounds
- Beautiful E-Stone countertops
- Moen, polished chrome faucets and plumbing fixtures
- Designer selected tile
- Full vanity width mirror
- Conveniently located medicine cabinet

PERSONALIZING OPPORTUNITIES

- Upgrade floors and counter tops
- Upgrade cabinet to a beautifully selected paint grade colors
- Upgraded appliance packages
- Numerous electrical and plumbing fixture upgrades
- Innovative security system
- Lighting fixture upgrades throughout the home
- Upgraded interior door options

PRELIMINARY





PRELIMINARY





A ELEVATION



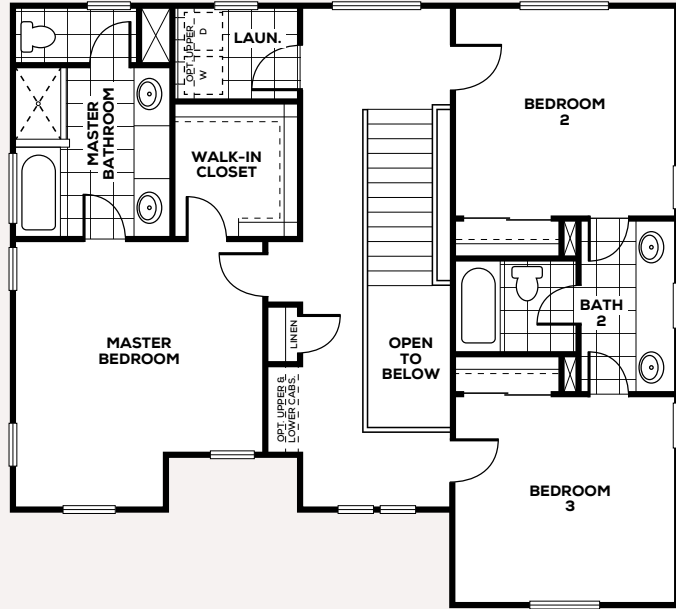
B ELEVATION



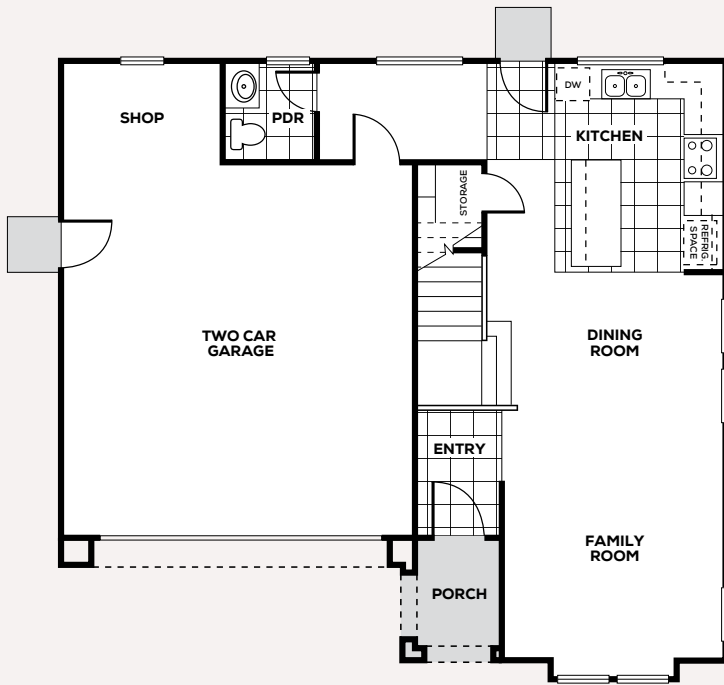
C ELEVATION

PRELIMINARY





SECOND FLOOR



FIRST FLOOR

PRELIMINARY





A ELEVATION



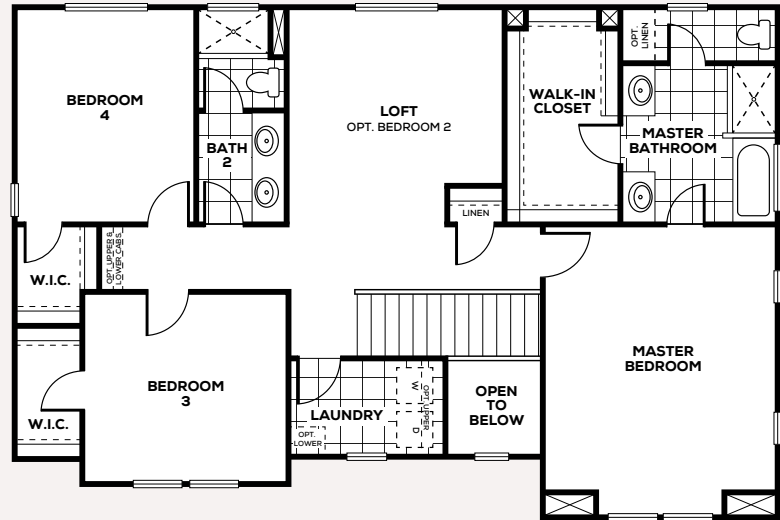
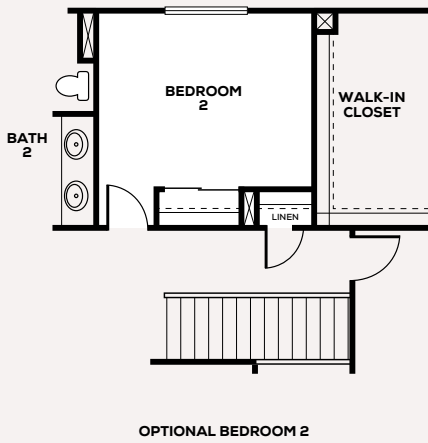
B ELEVATION



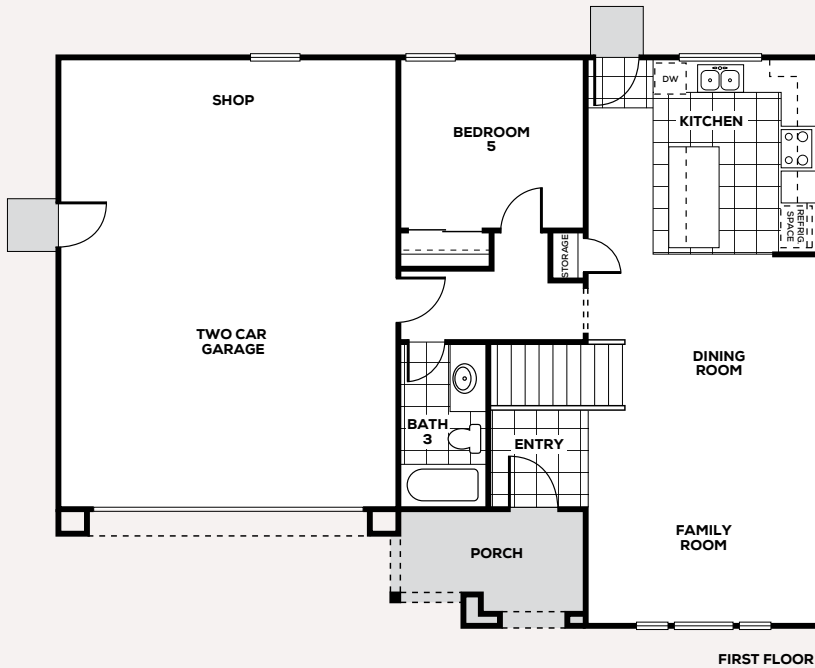
C ELEVATION

PRELIMINARY





SECOND FLOOR



FIRST FLOOR

PRELIMINARY





A ELEVATION



B ELEVATION



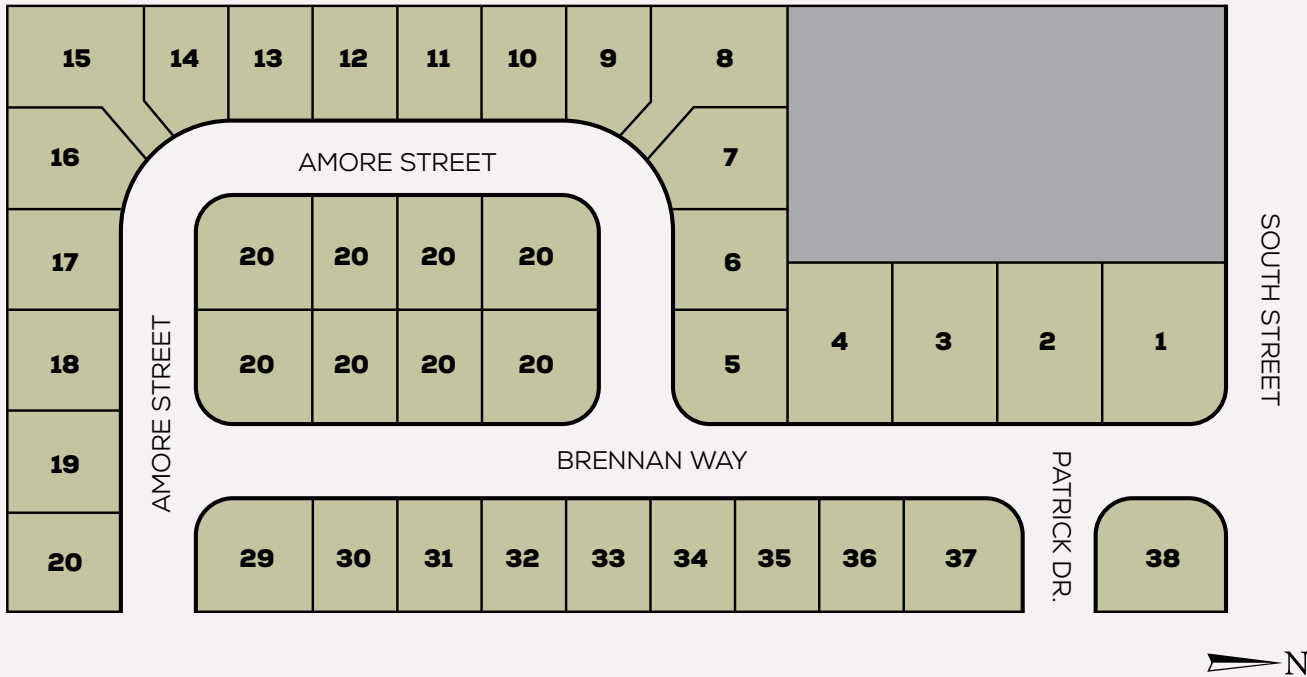
C ELEVATION

PRELIMINARY



THE Cottages

BY BLUE MOUNTAIN COMMUNITIES



PRELIMINARY

THE Cottages

BY BLUE MOUNTAIN COMMUNITIES

www.bluemountaincommunities.com



[/bluemountaincommunities](https://www.facebook.com/bluemountaincommunities)



[@bluemountaincommunities](https://www.instagram.com/bluemountaincommunities)

PRELIMINARY



In a continuous effort to improve our product, Blue Mountain reserves the right to make changes or modifications to pricing, standard features, options & other building specifications & dimensions without prior notice. Please see sales representative for details. Square footage is approximate based upon design. 08.23.17

BLUE MOUNTAIN
COMMUNITIES